

Women's Health Action Plan 2026-2027

Phase 3

Listen.
Invest.
Deliver.



An Roinn Sláinte
Department of Health

Contents

Minister's Foreword	5
Introduction	7
Women's Health	8
Listening to Women	9
Investment	12
International Comparisons	13
Progress to date	14
Womens Health in Ireland since 2019	16
Summary of Actions	19
Listen	20
Action 1	21
Invest	22
Action 2	23
Action 3	24
Deliver	26
Action 4	27
Action 5	28
Action 6	30
Action 7	32
Action 8	34
Action 9	35
Appendices	36
Glossary	37

A note on the language used in this Action Plan

This Action Plan uses the word “we” to refer to the Government and particularly the health sector. It signifies the partnership required between the Department of Health, its agencies – in particular the Health Service Executive, and organisations across the sector to implement this Action Plan.

A note on the contributors to this Action Plan

This Action Plan is the product of the passionate partnership and collaboration of so many people. Particular thanks is owed to the Women's Health Taskforce and its members, namely the staff in the Department of Health, the Department of Children, Disability and Equality, the Health Service Executive, the National Women and Infants Health Programme, the Institute for Public Health, the European Institute for Women's Health, the Irish College of General Practitioners, the National Women's Council of Ireland, Deep End Ireland, Merchants Quay Ireland, Spunout, Independent Living Movement Ireland, HIQA and the National Traveller Women's Forum.

Most particularly it is the product of the vision and insights shared by women, their advocates and the women's health professionals that work to support them.

Minister's Foreword



I am pleased to present the third phase of the Women's Health Action Plan (2026-2027). In five years, three Women's Health Action Plans have been published, detailing targeted actions and investments to improve the health experiences and outcomes for women and girls across Ireland.

The Women's Health Action Plan 2022-2023 established many firsts, including the first Specialist Menopause Clinic, "see and treat" Ambulatory Gynaecology Clinics, and launched the Free Contraception Scheme. We have lifted the taboo from menopause, removed cost barriers to contraception, reduced wait times for gynaecological care and developed new care pathways for women with specific conditions, such as endometriosis, and introduced publicly funded Assisted Human Reproduction (AHR) services.

This Government is committed to continued progress in women's health by embedding existing services across postnatal care, menopause, endometriosis, and screening, while also harnessing innovation to see how we can do things differently. This includes looking at new delivery in primary care through a comprehensive women's health programme, as well as how we can enhance access through our pharmacy services.

Research and knowledge of women's health globally remains underfunded and an obstacle to innovation and thorough understanding of how women and men can present differently in chronic disease and in their responses to medication. In 2025, I published an evidence and gap map review of women's health which highlighted key areas where we can begin to fill these information gaps. I have invested €2 million into a targeted research partnership, and this Action Plan further drives our ambition to become more aware and informed on women's health.

Since the creation of the Women's Health Taskforce in 2019, we have heard directly from women and girls about where our health services support and empower them and where it is lacking. Listening is the cornerstone of our Women's Health Action Plans and through the Women's Health Taskforce the voices of women and girls remain central to the transformations we have and will see in women's health in Ireland. I have heard directly from women dealing with the often severe symptoms of endometriosis, I have heard from mothers about their experiences in maternity care, and I believe it is through this consistent, focused effort, as outlined in our Action Plans, that we can ensure that generations of women and girls in Ireland will benefit from a responsive and proactive health service throughout their lives.

Introduction

The Women's Health Action Plan 2026-2027 represents this Government's commitment to continuing to improve health outcomes and experiences for women and girls in Ireland as outlined in the Programme for Government – Securing Ireland's Future. Beginning with the establishment of the Women's Health Taskforce in 2019, over €180 million of additional funding has been invested in women's health since 2020, supporting two previous Action Plans. This third phase of the Women's Health Action Plan seeks to build on progress and further promote women's health in Ireland.

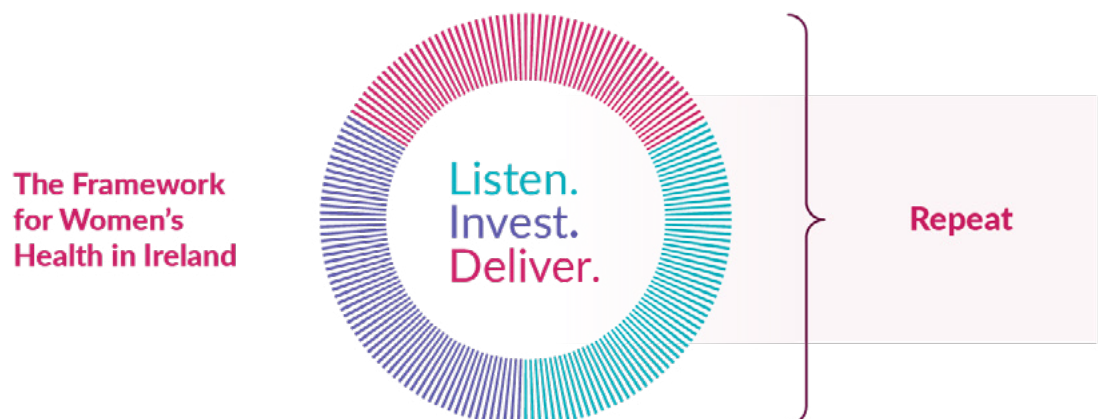
This Plan will further embed key women's health initiatives which have been delivered in recent years, while supporting new initiatives and targeted measures that women, the Minister for Health, clinicians, the Women's Health Taskforce and stakeholders recognise as priorities.

The Plan will continue to take a "Lifecourse Approach" focusing on the changing health care needs of women and girls across their lives, with women's voices continuing to be central to this work. Listening to women is an essential foundation for delivering the best possible outcomes for women's health.

In addition to continued listening, this plan has a strong focus on awareness and research. Awareness enables women and healthcare professionals to recognise symptoms early, allowing for timely medical intervention and treatment. Knowing about health risks and taking adequate preventative measures can significantly reduce the incidence of diseases. Education, awareness and a preventative approach can lead to better health outcomes across the lifecourse. Addressing historical biases in women's health research is crucial for further medical advancements and innovation. Symptoms and risks of diseases can affect women differently to men, for example in cardiovascular health and autoimmune diseases. Underfunding in women-specific health research has led to a gender gap in knowledge and treatment. The exclusion of women from clinical trials until the early 1990s has contributed to gaps in our knowledge of how treatments and medication affect women differently to men. Women specific health events including pregnancy, menstrual health and conditions such as endometriosis also require further research and understanding.

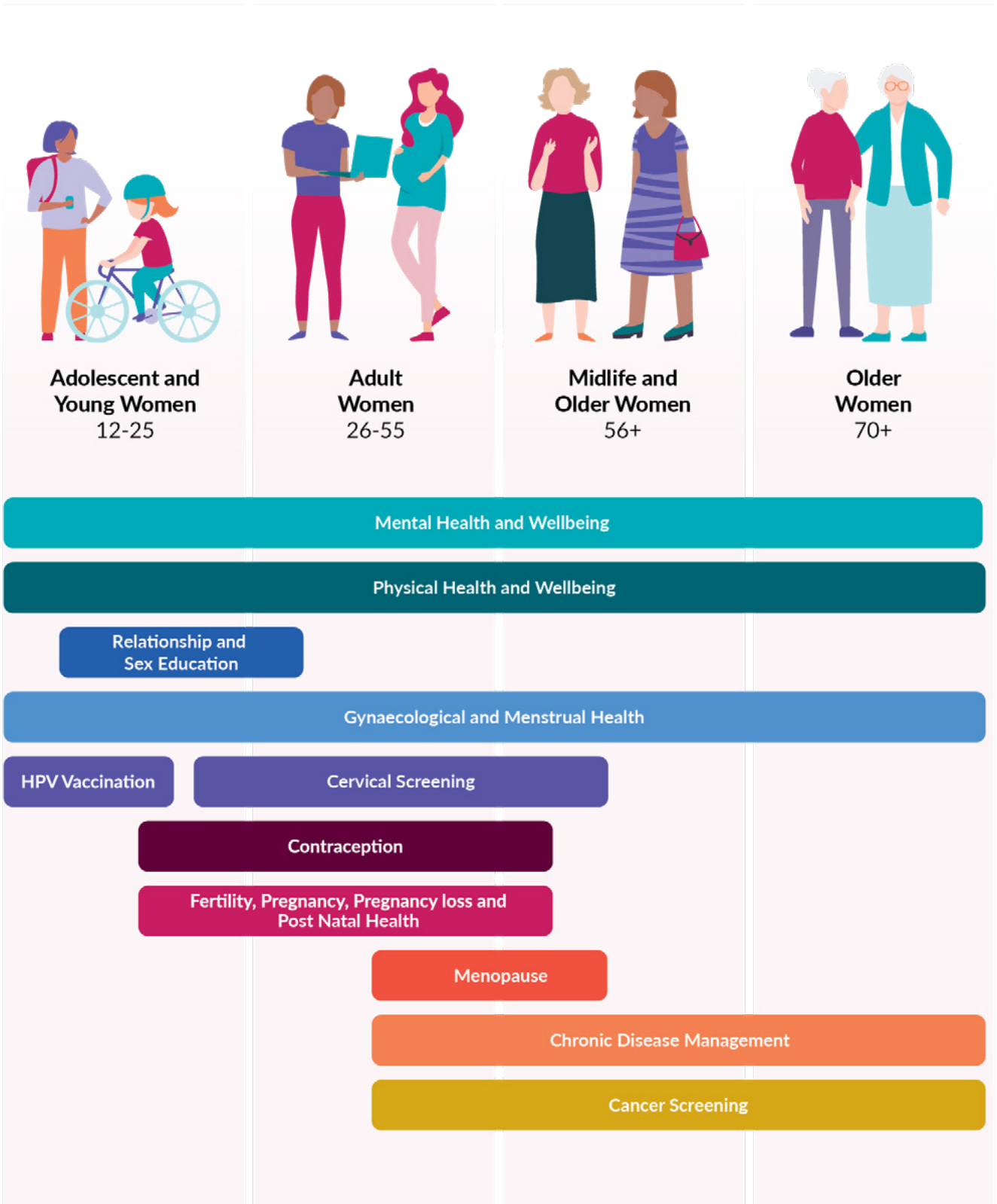
The Women's Health Action Plan Phase 3: 2026-2027 will continue to progress the Department of Health's core programmes, reforms and strategies for Women's Health and through this focused approach will accelerate the delivery of further health services and supports for better health outcomes for women and girls in Ireland.

The Plan continues to utilise the Women's Health Action Plan Framework as follows:



Women's Health

Life course events impacting women



Listening to Women

Women's Experiences of Healthcare in Ireland's Listening Forum 2025

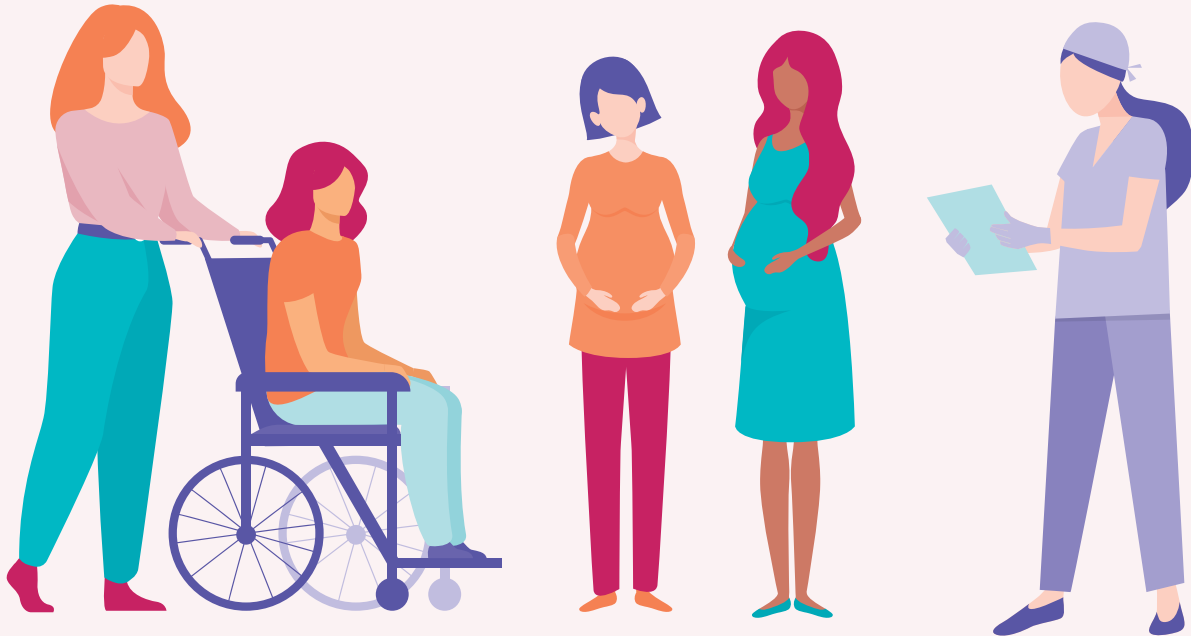
The voices of women remain central to the actions developed in this third phase of the Women's Health Action Plan. In the Women's Health Action Plan 2024-2025 Phase 2 : An Evolution in Women's Health, we committed to delivering a new, structured 'Patient Voice Forum' – renamed the 'Women's Experiences of Healthcare in Ireland Listening Forum' – to capture real-world insights into our healthcare services and how women feel about them.

In partnership with the National Women's Council of Ireland, we brought together women in all their diversity to amplify their voices and use their views and experiences to shape future health policy.

The Forum resulted in 15 distinct improvements women want to see within the healthcare system, and broader society. Many of the points raised are addressed directly by the actions contained within this plan, while some will require a wider health system or Whole-of-Government approach. Indeed, the *Programme for Government: Securing Ireland's Future* outlines key women's health priorities that address some of the points raised by the Forum participants. Examples include, but are not limited to, work related to increasing the number of GP training placements, strategic review of General Practice, increasing supply of healthcare graduates, development of new elective centres and surgical hubs, rollout of hospital care over 7 days, public only consultant contracts, introduction of the HSE patient app, development of the National Shared Care Record, development of a National Electronic Health Record and roll out of more virtual care/wards and expansion of the Enhanced Community Care programme

Phase 3 of the Women's Health Action Plan commits to continue listening to women, experts and advocates. We will keep communication channels open for women using women's health services and in particular circumstances where women feel these services need improvement.





“Over the last few years, the improvements in the health service have been tremendous. The appointment system has been much more streamlined.”

“The language that’s used towards women is frankly quite patriarchal.”

“Some services and machines are inaccessible for people with disabilities. We need universal design of healthcare spaces.”

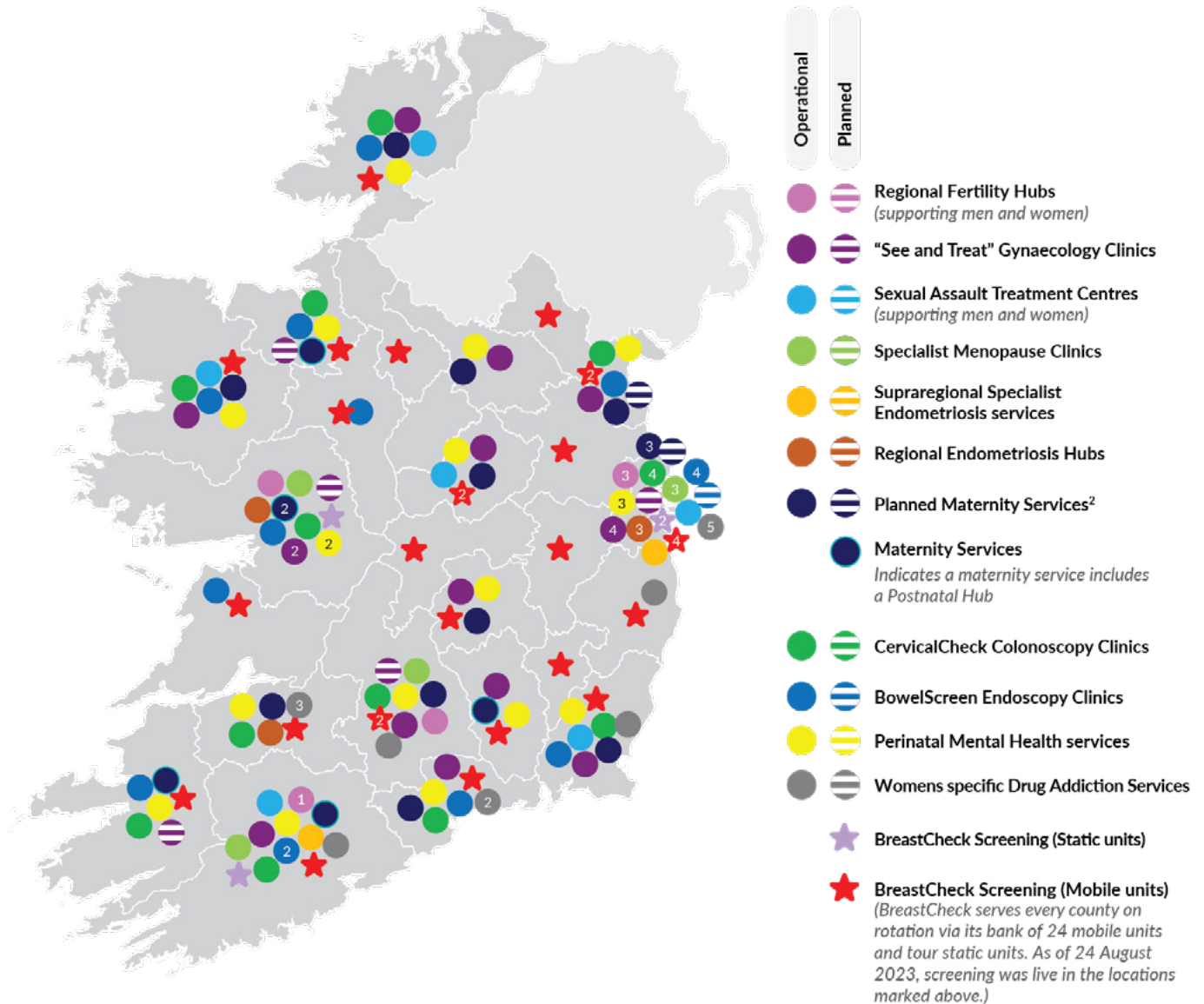
“The BreastCheck is brilliant. The BowelScreen is brilliant. The services are really efficient.”

“Trust and listen to women as they are the best judge of their bodies.”

“I found the diabetic services in the maternity hospital brilliant. Very good.”

Women's Health in Ireland 2025¹

National map of existing and planned services



Notes: ¹There are also many primary care, secondary care and tertiary care services available to women to support a range of health areas not depicted here. Always speak to your primary care health provider if you have a concern about your health.

²All 19 maternity units providing termination of Pregnancy Services in line with legislation, and over 400 GPs are providing services.

The Free Contraception Scheme was introduced in September 2022 and, as of September 2025, has just under 2,000 pharmacies and just over 2,400 GPs providing services.

The Free HRT Arrangement for menopause was introduced in June 2025 with 98% of Community Pharmacies now providing free HRT to women.

Investment



Over €180 million **Investment in** **Women's Health** **since 2020**

Significant progress and investment have been made in Women's Health since the establishment of the Women's Health Taskforce in 2019 and the subsequent publication of the Women's Health Action Plans – Phases 1 and 2. Underscoring the Government's commitment to Women's Health has been the investment of dedicated additional funding of over €180 million since 2020.

This investment is aligned to the Government's continued strong commitment in the Programme for Government to "further developing the transformation in women's healthcare".

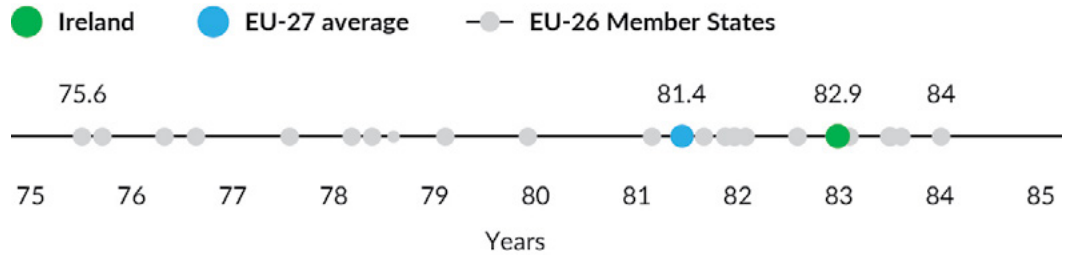
The additional funding allows new services and initiatives to be put in place and is recurring each year. It builds on and is in addition to existing funding in the system which already provides services to women on an annual basis through the implementation of other various national health strategies.

The Women's Health Fund was established in 2021 to support the implementation of priority actions identified by the Women's Health Taskforce and outlined in the Women's Health Action Plans. It has invested in over 100 initiatives to date and will continue to support the implementation of this Women's Health Action Plan.

The Action Plan commits to advocating for additional funding through future budgetary processes to further develop and enhance women's health services and supports.

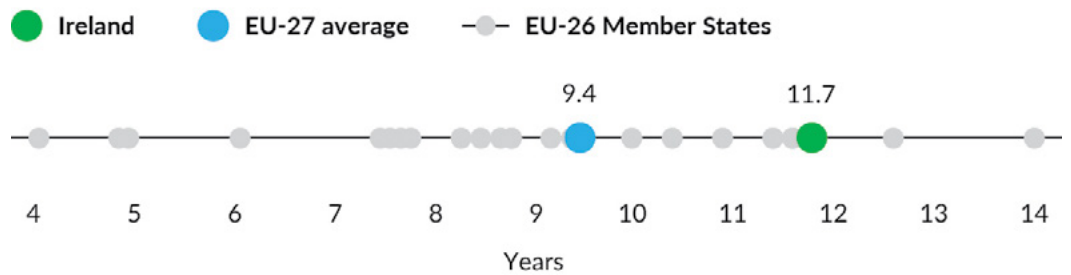
International Comparisons

Life Expectancy at Birth (2023)



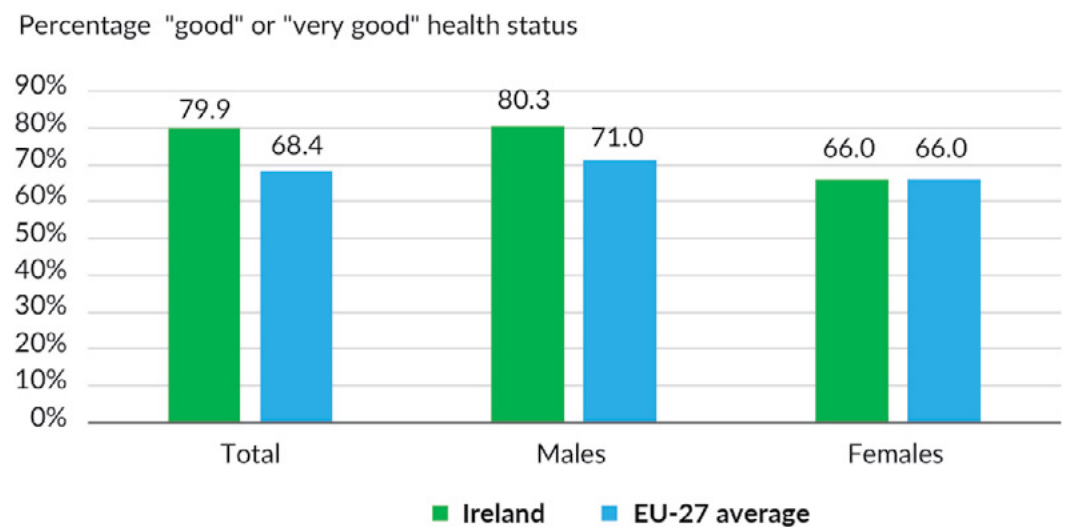
*Source: Eurostat Online Database: Life expectancy by age and sex

Healthy Life Years at age 65 (2023)



*Source: Eurostat Online Database: Healthy life years by sex (from 2004 onwards)

Self-reported health status (2024)



*Source: Eurostat Online Database: Self-perceived health by sex, age and labour status

What we Have Achieved 2019 – 2025

Progress to Date

6

Specialist
Menopause Clinics
with expanded hours

2

Phases of **National
Menopause
Awareness**
Campaign & webpage

18

“See & Treat”
**Ambulatory
Gynaecology Clinics**

16

Additional specialist
Eating Disorder
Teams
(2 teams developed in February 2026)

9

**Postnatal
Hubs**
(4 hubs opened in February 2026)

6

Regional
Fertility Hubs

24

Additional
**Lactation
Consultants**

5

Regional
**Endometriosis
Hubs** and 2 Supra
Regional Hubs

19

All maternity hospitals
providing **Termination
of Pregnancy** Services

Cervical Cancer Elimination Target Date announced - (2040) and Elimination Strategy launched

Free Contraception for all women and girls aged 17 to 35 years inclusive

Multidisciplinary **Perinatal Mental Health** teams in all 19 maternity units

Continued listening to women: Experiences of Healthcare in Ireland Forum and Endometriosis Patient Forum

Model of Care for **Traveller Women** facing homelessness

Womens **Mental Health Charter** published

Clinical Lead for Women's Health in General Practice

Launch of **Menopause in the Workplace** Policy Framework for Civil Service

Enhanced supports for **Period Dignity**

Access to state-funded **AHR treatment** introduced and expanded: to include couples with one existing child in their relationship

Safe Access Zones Legislation enacted

Assisted Human Reproduction legislation enacted

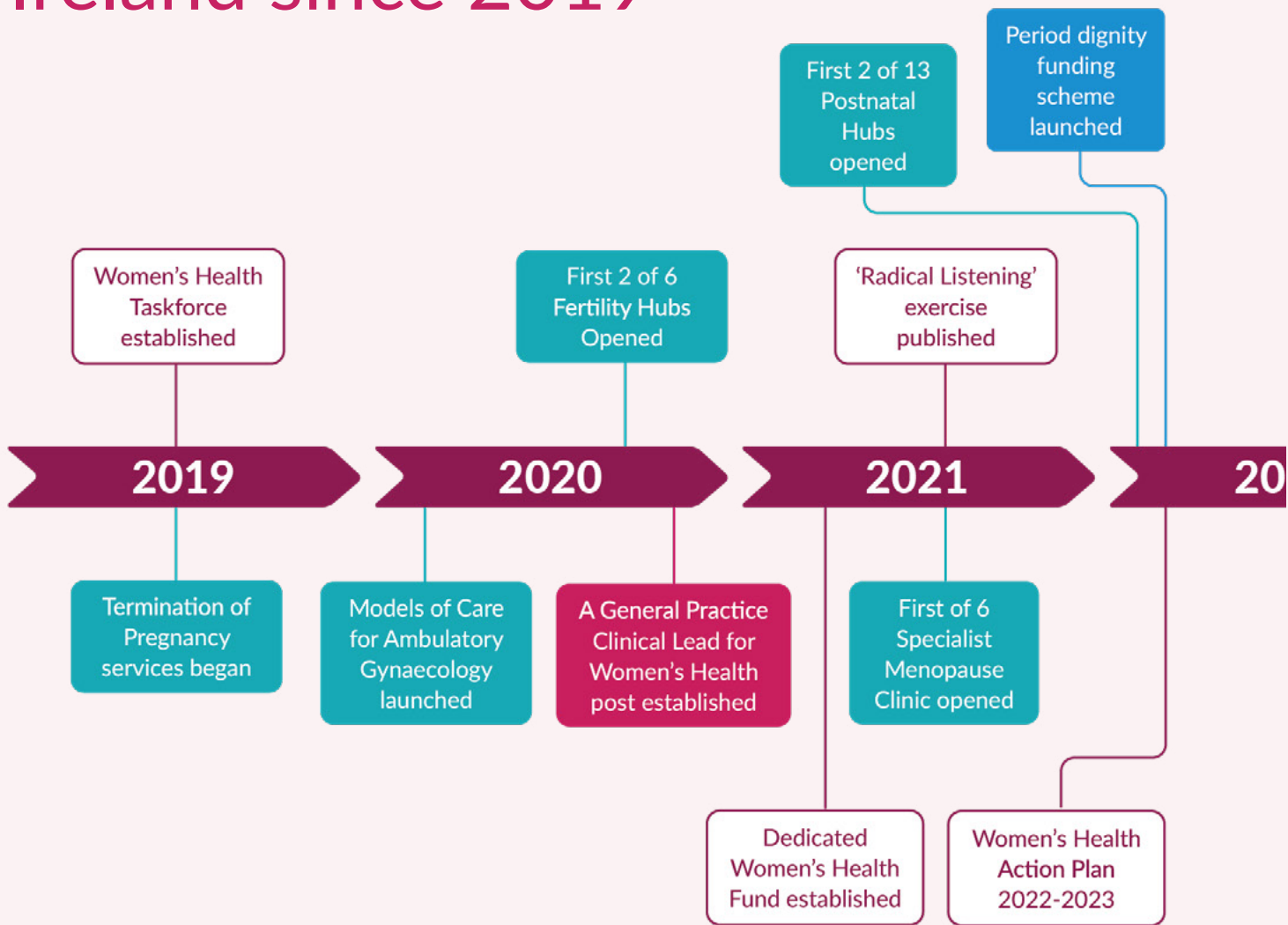
National **Endometriosis Framework** launched

First public National **Assisted Human Reproduction Centre** partially opened

Various **Women's Health research** commissioned

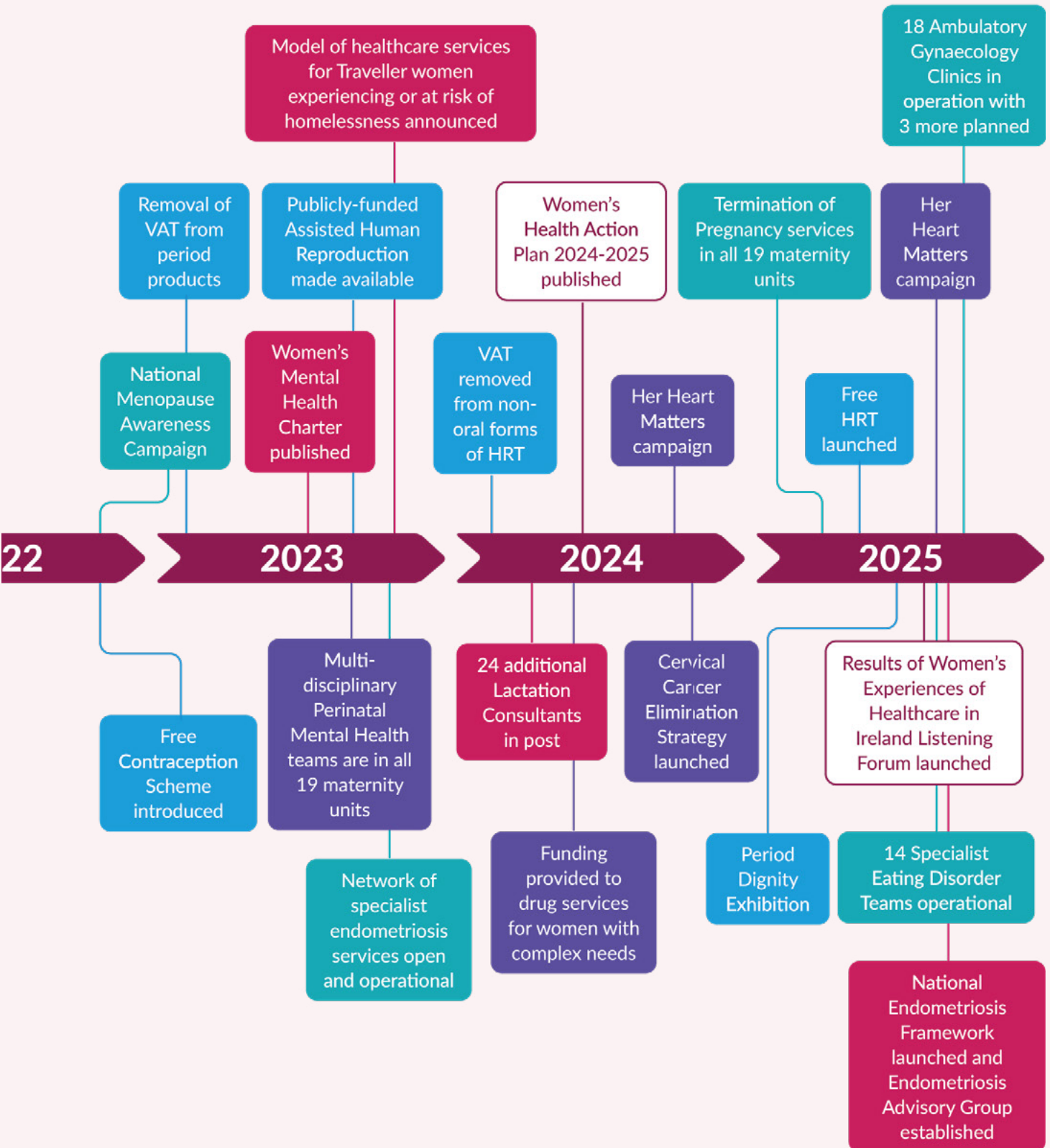
Free HRT medications for menopause

Women's Health in Ireland since 2019



Key:

- Access
- Affordability
- Prevention
- Quality





Listen.
Invest.
Deliver.

Actions



1

We will continue to **listen** to and partner with those experiencing, delivering, and planning care through the Women's Health Taskforce.



2

We will **invest**, through budgetary processes, in women's health priorities and key policy actions, to ensure continued development of women's health services in Ireland.



3

We will build on our **knowledge** of women's health through research, evidence, data collection and innovation.



4

We will enhance access to **proactive** and **preventative** healthcare to support a better quality of life.



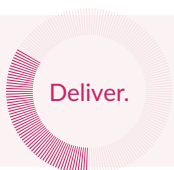
5

We will **embed** and **upscale** women's health initiatives put in place through the implementation of the previous 2 phases of the Women's Health Action Plan.



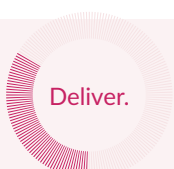
6

We will **improve** the experiences of **marginalised groups** of women through initiatives that promote social inclusion and social connectedness.



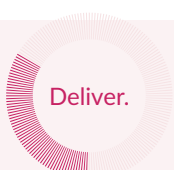
7

We will **spotlight areas** of women's health in 2026/27, continuing the momentum of improved lifecourse healthcare for women and girls.



8

We will inform on women's health initiatives, services and public health information through **awareness** campaigns, **education** and **signposting**.



9

We will continue to **implement** existing **strategies** and develop new **policies** that support the health of women at all life stages.

The background features a large, abstract graphic composed of several overlapping circles. Each circle is filled with a pattern of fine, radiating lines that create a sunburst or ripple effect. The colors transition from a deep teal at the top to a lighter, almost white-blue at the bottom. The word "Listen." is centered within the largest, lightest circle in the middle of the composition.

Listen.

Action 1



We will continue to **listen** to and partner with those experiencing, delivering, and planning care through the Women's Health Taskforce.

1A

The Women's Health Taskforce will continue to over the lifetime of this Action Plan monitor progress, drive specific priorities, listen to women and work to identify future priorities.

1B

We will compile a progress report on the implementation of the Women's Health Action Plan 2024-2025 Phase 2 : An Evolution in Women's Health.

1C

We will relaunch a women's health webinar series where clinicians, experts, advocates for women's health can inform the Women's Health Taskforce.

1D

We will continue to listen by considering and taking on board results of national and international surveys.



Listen.

An abstract graphic consisting of several overlapping circles of varying shades of blue and purple. Each circle is filled with a pattern of fine, parallel lines that radiate from the center, creating a textured, sunburst-like effect. The circles overlap in a way that creates a sense of depth and movement.

Invest.

Action 2



We will invest, through budgetary processes in women's health priorities and key policy actions to ensure continued development of women's health services in Ireland.

2A

We will implement women's health priorities as identified in 2026 Budgetary process and in the HSE's 2026 National Service Plan.

2B

Through the Women's Health Fund, we will continue to ringfence funding to support innovative approaches to women's health in line with this Action Plan.

2C

The Women's Health Fund will ring fence funding in 2026 and 2027 to support the Applied Partnership Awards Women's Health Research Programme operated by the Health Research Board (HRB).

2D

Through the 2027 Budgetary Process we will continue to advocate for and source funding for health initiatives that improve the outcomes and experiences for women and girls in Ireland.



Invest.

Action 3



We will build on our **knowledge** of women's health through research, evidence, data collection and innovation.

Research and evidence

3A

We will fund and support the *Applied Partnership Awards Women's Health Research Programme* operated by the Health Research Board (HRB) throughout 2026 and 2027.

This programme will cover women's health generally, as well as highlighting specific policy themes as follows:

- Postpartum Mental Health, with a particular focus on traumatic births
- Endometriosis
- Menstruation
- Culturally sensitive Healthcare, Intersectional impacts on Women's Health

3B

We will conduct and publish an evidence review on perinatal mental health in 2026, in collaboration with the HRB¹.

3C

We will review the implementation of National Maternity Strategy 2016-2026 to inform us on the future strategic direction for maternity services in Ireland.

3D

We will identify, through research, the effect of sex-specific, psychosocial, socioeconomic risk factors on cardiovascular disease in women, and evaluate intervention strategies.

Invest.

¹ Perinatal Mental Health Review is based on the wider women's health evidence review/ gap map conducted by the HRB in 2025, (delivered via the Women's Health Action Plan Phase 2).

Action 3 (continued)



We will build on our **knowledge** of women's health through research, evidence, data collection and innovation.

Data

3E

We will improve data on the gendered impact of family care on women and identify the types of health and social care supports that are needed.

Collaboration and Innovation

3F

We will explore collaboration opportunities with innovation funding initiatives that align with the Women's Health Action Plan.

3G

We will work with the Clinical Trials Advisory Council when it is established in 2026, and subsequently the National Clinical Trials Body to develop strategies that promote diversity and inclusion in clinical trials, specifically addressing the gap in women's health research and improving the enrolment and retention of women across all clinical areas.



Invest.

The background features a large, abstract graphic composed of several overlapping circles. Each circle is filled with a dense pattern of thin, parallel lines that radiate from the center, creating a sunburst or ripple effect. The circles overlap in a way that creates a sense of depth and movement. The overall color palette is a range of pinks and reds, from light, almost white tones to deep, vibrant reds.

Deliver.

Action 4



We will enhance access to **proactive and preventative** healthcare to support a better quality of life.

4A

We will support the implementation of new and ongoing initiatives and technologies to enhance the BreastCheck service.

4B

We will explore and support the development of a Women's Health Programme in General Practice.

4C

We will support initiatives to promote and develop the delivery of women's health services through local pharmacies.

4D

We will support initiatives that improve early detection and prevention of cardiovascular disease in young women.

4E

We will support the implementation of the Cervical Cancer Elimination Plan to achieve our goal of full elimination by 2040.

4F

We will extend the Laura Brennan HPV Catch-Up Vaccination Programme as a key step towards achieving cervical cancer elimination by 2040.

4G

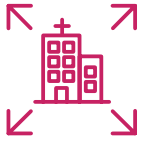
We will further expand and embed specialist smoking cessation services across all maternity hospitals and maternity networks.

4H

We will include a focus on women in the workplace in the second phase of implementation of the Healthy Workplace Framework.

Deliver.

Action 5



We will **embed** and **upscale** women's health initiatives put in place through the implementation of previous 2 phases of the Women's Health Action Plan.

Maternity, Fertility & Gynaecology

5A

We will increase the number of Postnatal Hubs nationally to 13 by establishing 4 more hubs in Waterford, Limerick, Cavan and Letterkenny in 2026.²

5B

We will examine the introduction of pelvic floor physiotherapy supports for women after childbirth, including expanding the national availability of physiotherapy supports via Postnatal Hubs.

5C

We will progress development of the new National Maternity Hospital at Elm Park.

5D

We will continue to progress, in line with policy objectives, the further development of the Model of Care for Fertility and publicly funded Assisted Human Reproduction treatment and services, including the full operationalisation of the first public Assisted Human Reproduction Centre in Cork.

5E

We will continue the expansion programme for Ambulatory Gynaecology Clinics.

5F

We will extend the range of services offered in the Specialist Menopause Clinics.

Deliver.

² These Hubs enhance postnatal care, delivering community-based, midwifery-led clinics, covering a spectrum of health and wellbeing services. An independent evaluation of the pilot Phase 1 Postnatal Hubs, published in February 2026, will provide an evidence base for further improvements to the Postnatal Hubs.

Action 5 (continued)



We will **embed** and **upscale** women's health initiatives put in place through the implementation of previous 2 phases of the Women's Health Action Plan.

Contraception

5G

We will continue to expand eligibility for free contraception to the full reproductive age range, sequentially, in line with commitments in the National Sexual Health Strategy, 2025-2035.

5H

We will legislate to enable pharmacist prescribing of contraception within eligibility for the Free Contraception Scheme, widening the role of pharmacists in delivering contraception and enabling women to access the majority of their repeat prescriptions for short-acting contraception through their local community pharmacy.

Mental Health

5I

We will develop a Gender-Sensitive Toolkit, in collaboration with the National Women's Council, to assist with embedding gender-sensitive and trauma-informed approaches in mental health services.

5J

We will continue work to progress a Perinatal Mother and Baby Unit, a key priority under the Model of Care for Specialist Perinatal Mental Health Services.³

5K

We will further develop specialist perinatal mental health services, recruit consultants and commence the Model of Care review.

5L

We will publish a new Suicide and Self-harm Reduction Strategy which identifies specific vulnerable communities, such as perinatal women, whose needs will be met via targeted interventions.

5M

We will continue to grow specialist multidisciplinary eating disorder teams and commence a review of the model of care.

³ The Perinatal Mother and Baby Unit will be an inpatient mental health service with relevant maternity support to allow women to stay with their babies during their mental health treatment, and it is envisaged that it will be developed on the grounds of St Vincent's University Hospital in Dublin.

Deliver.

Action 6



We will **improve** the experiences of **marginalised groups** of women through initiatives that promote social inclusion, social connectedness and equity.

6A

We will increase the availability of social care supports in the community to help older women living alone to remain living at home.

6B

We will expand the free period products scheme to new locations.

6C

We will increase the availability of health and social care supports for family carers, of whom the majority are women, including the provision of training, establishing clearer pathways to services, and improving access to respite.

6D

We will embed services to improve health outcomes in women, including Traveller women, who are at risk of homelessness and support assertive outreach.

6E

We will mainstream gender-sensitive responses and interventions for women who use drugs through the National Drugs Strategy 2026-2029 and involve women with lived and living experience in the planning and delivery of drug and alcohol services.

6F

We will work with the Irish Prison Service, the Probation Service and the HSE to enhance healthcare services for women in prison and following discharge into the community.

6G

We will improve access to healthcare services for women in the Roma community through the development of a Roma Health Action Plan.

6H

We will expand access to health services for victims of human trafficking by establishing a regional satellite clinic.

Deliver.

Action 6 (continued)



We will **improve** the experiences of **marginalised groups** of women through initiatives that promote social inclusion, social connectedness and equity.

6I

We will continue to expand the availability of supports to maintain social connectedness for older women.

6J

We will expand services to address an identified need for Female Genital Mutilation (FGM) specialist care and support continuity of care and reduced waiting times.

6K

We will work in collaboration with the Well Being and Health (Pillar 4) group members under the *National Human Rights Strategy for Disabled People 2025-2030* to reflect the health needs of women with disabilities in future action plans under that Strategy.

Deliver.

Action 7



We will **spotlight areas** of women's health in 2026/27, continuing the momentum of improved lifecourse healthcare for women and girls.

Endometriosis

7A

We will implement the National Framework for the Management of Endometriosis to improve access to diagnostics, outpatient appointments and surgery, and to provide additional supports for women with endometriosis, including pain management and physiotherapy in line with the HSE National Service Plan 2026 and into 2027.

7B

We will continue to work with the Endometriosis Priority Actions Advisory Group, comprised of patients, policy makers, and clinicians, in providing advice, oversight and guidance in relation to the agreed actions on endometriosis throughout 2026.

7C

We will work with the Irish College of GPs to provide evidence-based, easily accessible educational materials for GPs and trainee GPs, focused on the diagnosis and management of endometriosis in primary care.

7D

We will seek endometriosis research proposals through the HRB Applied Partnership awards (detailed on Action 3A).

7E

We will support the HSE's National Women and Infants Health Programme to progress collaborations with international experts in the management of endometriosis to promote care in line with international best practice and enhance shared learning across jurisdictions.

7F

We will support the HSE's National Women and Infants Health Programme to scope, develop and deliver on a National Menstrual Health Awareness Campaign which will have a focus on endometriosis.

Deliver.

Action 7 (continued)



We will **spotlight areas** of women's health in 2026/27, continuing the momentum of improved lifecourse healthcare for women and girls.

7G

We will develop mental health supports for women suffering with endometriosis.

7H

We will deliver, through the HSE, a School Education Programme to increase both awareness and the understanding of endometriosis.

Other Areas

7I

We will enhance public health measures to address **sunbed use**, having regard to the commitment in the Programme for Government to "explore ways to ban commercial sunbed use", noting that women comprise the majority of sunbed users.

7J

We will promote women's health at EU level and build relationships with our EU counterparts via Ireland's EU Presidency.

7K

We will develop a policy to improve **breastfeeding** rates in Ireland which will include additional supports for breastfeeding, more lactation consultants in hospitals and communities, and increased support for voluntary breastfeeding groups.

Deliver.

Action 8



We will inform on women's health conditions/stages, initiatives, services and public health information through awareness campaigns, education and signposting.

8A

We will build awareness among healthcare providers and patients regarding early detection and prevention of Cardiovascular Disease in young women.

8B

We will develop educational programmes on Cardiovascular Disease in women for physicians, scientists, allied healthcare providers, and communities.

8C

We will design and deliver a targeted, evidence informed, National Menstrual Health Awareness Campaign across key areas including, but not limited to menstruation and endometriosis.

8D

We will improve access to women's health information through our existing gov.ie/womenshealth, signposting new services and schemes now available under the women's health action plans.

8E

We will raise awareness of the need to increase Folic Acid intake to reduce the incidences of Neural Tube Defects.

8F

We will develop a breastfeeding awareness campaign to increase knowledge of the benefits of breastfeeding across society.

8G

We will work with our health sector colleagues to promote cultural and gender sensitivity awareness for healthcare professionals.

Deliver.

Action 9



We will continue to **implement** existing strategies and develop new policies that support the health of women at all life stages.

[Digital for Care: A Digital Health Framework for Ireland 2024-2030](#)

[Department of Health Statement of Strategy 2025-2028](#)

[Healthy Ireland Framework 2013-2025](#)

[Ireland's Clinical Trials Landscape](#)

[Ireland's Cervical Cancer Elimination Action Plan 2025-2030](#)

[National Sexual Health Strategy, 2025 – 2035](#)

[National Carers Strategy](#)

[Draft National Drugs Strategy 2026 - 2029](#)

[National Physical Activity Framework 2024-2040](#)

[National Cancer Strategy 2017 - 2026](#)

[National Screening Service Strategic Plan 2023-2027](#)

[Improving equity in screening: A strategic framework 2023-2027](#)

[National Strategy for Women and Girls 2025-2030](#)

[National Traveller Health Action Plan 2022-2027](#)

[National Rare Disease Strategy 2025-2030](#)

[National Stroke strategy 2022-2027](#)

[Support the development of a future strategic direction following the expiration of the National Maternity Strategy: Creating a Better Future Together 2016 – 2026](#)

[Pathways to Wellbeing – National Mental Health Promotion Plan 2024-2030](#)

[Sharing the Vision: A Mental Health Policy for Everyone 2020-2030](#)

New policies in Development

Connecting for Life: Ireland's Suicide and Self-Harm Reduction Strategy 2026-2035 (In Development)

Breastfeeding Policy (In Development)

Path to Universal Healthcare: Sláintecare 2026+ (In Development)

Deliver.

Appendices

- 1 [Women's Health Taskforce](#)
 - 2 [Women's Health Action Plan 2022-2023](#)
 - 3 [Women's Health Action Plan 2024-2025 Phase 2: An evolution in Women's Health](#)
 - 4 [Women's Health Action Plan 2022-2023 Progress Report](#)
 - 5 [Women's Health Treatment Interventions and-outcomes an evidence and gap map review](#)
 - 6 [Programme for Government 2025 Securing Irelands Future](#)
 - 7 [The Endometriosis Priority Actions Advisory Group](#)
 - 8 [National Endometriosis Framework](#)
 - 9 [Women's Health Radical Listening Report 2021](#)
 - 10 [Our Health our voices women's experiences of healthcare in Ireland listening forum](#)
 - 11 [Embedding Women's Mental Health in Sharing the Vision](#)
 - 12 [The National Maternity Strategy – Creating a Better Future Together 2016-2026](#)
 - 13 [Health at a Glance 2025 OECD Indicators](#)
 - 14 [Gov.ie Menopause](#)
 - 15 [HIHI Femtech in Ireland: The Case for Prioritising Women's Health Research and Innovation](#)
 - 16 [NWC Perinatal Mental Health -Listening to Women's and Shaping the Road Ahead](#)
 - 17 [Evaluation of the Postnatal Community Hubs in Ireland Final Report December 2025](#)
 - 18: [Eurostat Online Database](#)
 - 19 [Healthy Ireland Survey documents](#)
 - 20: [National Sexual Health Strategy, 2025-2035](#)
-

Glossary

Ambulatory Gynaecology Clinics: Clinics which carry out minor procedures that can be performed in a clinic setting while the patient is awake and able to talk to a doctor or nurse.

Assisted Human Reproduction (AHR) Services, including IVF, were introduced by the State for the first time, breaking down financial barriers to fertility treatment. This significant step acknowledges the emotional and financial toll of infertility on women and their families.

Assisted Human Reproduction Treatment: A broad catch all term for a number of different fertility treatments which includes:

- **In Vitro Fertilisation (IVF):** A woman's eggs are taken from her ovaries and fertilized by sperm in a laboratory, where they develop into embryos. The embryos are transferred back to the uterus a few days later.
- **IVF with Intracytoplasmic Sperm Injection (ICSI):** Sperm is injected directly into an egg to assist conception. The embryos are then transferred back to the womb.
- **Intra-Uterine Insemination (IUI):** A less invasive and complex form of AHR treatment involving placing prepared sperm directly into the uterus around ovulation to increase the number of sperm reaching the fallopian tubes.

Endometriosis: A disease in which tissue similar to the lining of the uterus grows outside the uterus. It can cause severe pain in the pelvis and make it harder to get pregnant. Endometriosis can start at a person's first menstrual period and last until menopause.

Endometriosis Hubs: were set up to deliver specialised care for a condition that affects one in ten women yet has historically been underdiagnosed and misunderstood. These hubs, supported by two supra-regional centres, are helping women receive earlier diagnosis and tailored treatment.

Fertility Hubs: Dedicated fertility clinics which offer fertility investigations and treatments for patients within their respective catchment areas.

Free Contraception Scheme was launched in 2022 for women aged 17 to 25, has since been expanded to include all women aged 17-35 years, reducing cost-related barriers to contraception.

Gender-Sensitive Toolkit: Will assist with embedding gender-sensitive and trauma-informed approaches in mental health services, including within the National Clinical Programmes on Mental Health. This will be aligned with Sharing the Vision and the key transformation programmes underway in mental health services (the National Mental Health Operating Framework; General Adult Community Mental Health Team Operating Guidelines; and the Child and Youth Mental Health Action Plan).

Genomics: A field of biology focused on studying all the DNA of an organism.

Lactation Consultant: Is a health professional who specializes in the clinical management of breastfeeding.

Life Course Approach: life course approach acknowledges that health and well-being depend on the interaction of multiple protective and risk factors, particularly during sensitive and critical periods throughout people's lives and across generations. It strengthens equity by recognizing how critical periods, transitions and cumulative exposures shape health trajectories. (WHO, "Framework to implement a life course approach in practice")

Menopause is a natural part of ageing when a woman stops having periods due to lower hormone levels.

Specialist Menopause Clinics are established across six locations, offering holistic and comprehensive care for women experiencing complex menopause symptoms.

Supra regional Endometriosis Hubs: Provide specialist care to severe and complex cases of endometriosis.

Glossary (continued)

Safe Access Zones: A Safe Access Zone is an area within 100 metres of an entrance or exit to a premises where a General Practitioner or/and gynaecologist/obstetrician provide services. The Zones also apply to the entrances and exits to acute hospitals campuses. Safe Access Zones were introduced to ensure that people accessing termination of pregnancy services could do so in safety, dignity and privacy.

Perinatal: The period of time when you become pregnant and up to a year after giving birth.

Postnatal Hub: Hubs which support women in the weeks following birth by addressing many of the gaps identified by women in postnatal care including education, breastfeeding, physiotherapy, emotional and physical supports.

Radical Listening: Listening exercises which emphasise listening without judgement, keeping silent and giving your full attention so that the speaker is comfortable to continue sharing.

