

# 2022 | Alcohol treatment demand in Ireland

HRB StatLink Series 15

## Alcohol treatment demand

Total number of cases treated

**7,421**



**44%**  
new cases



**52%**  
previously treated cases

## Characteristics

**-42+**

**42 yrs**  
median age



**8%**  
homeless



**34%**  
employed

## Gender



**62%**  
males

**38%**  
females

## Alcohol dependent

All cases

**65%**



**64%**  
new cases



**68%**  
previously treated cases

## Standard drinks



**-18+** 2022

**-15+** 2016

## Parental status



**57%**  
of treated cases were  
**parents who had children**

## Of cases with children aged 17 or younger

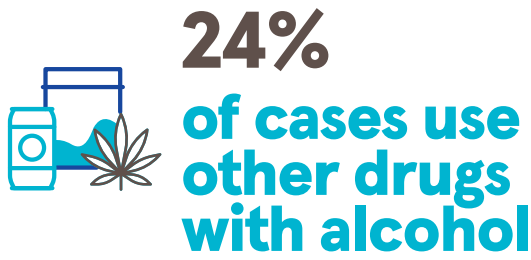


**51%**  
of cases lived with children



**67%**  
females  
**40%**  
males

## Polydrug use \_\_\_\_\_ Drugs most commonly used with alcohol \_\_\_\_\_



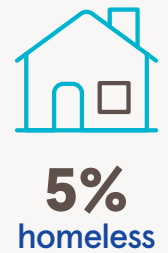
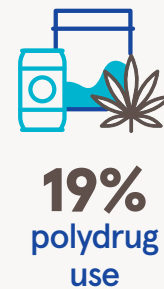
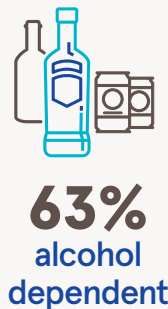
## Polydrug problem drug by age \_\_\_\_\_



## Gender \_\_\_\_\_ Female \_\_\_\_\_



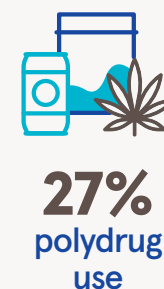
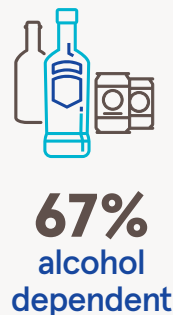
**-44+**  
**44 yrs**  
median age



## Male \_\_\_\_\_



**-41+**  
**41 yrs**  
median age



The HSE low risk drinking guidelines for females is up to 11 standard drinks in a week and up to 17 standard drinks in a week for males with drinks spaced out over the week, with two to three alcohol free days per week.

<https://www2.hse.ie/living-well/alcohol/health/improve-your-health/weekly-low-risk-alcohol-guidelines/>

### Need Advice

If you have any concerns regarding alcohol or other drugs please visit [www.drugs.ie](http://www.drugs.ie) or call 1800 459 459