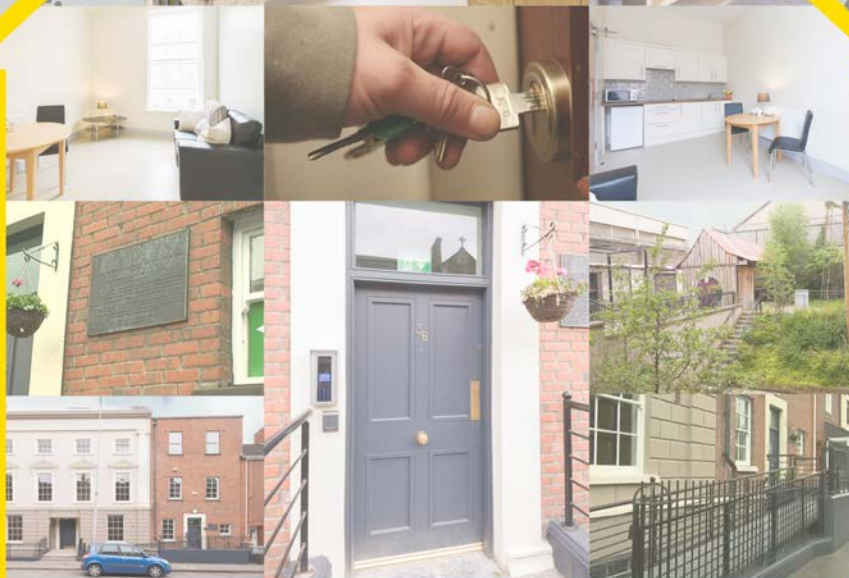


# Planning our Future



Dublin  
**Simon**  
Community

**Annual Impact Report**  
**2015**

Serving Dublin, Kildare, Wicklow, Meath

# The Road

*The road is the path I am on.  
Am I going in the right direction?  
It doesn't look like a nice, happy place.  
But I know once I walk down this road  
I will get to a crossroad  
Where I will pick a new path.*

*Everything you do will lead you to this point  
And you have to decide,  
Do you walk through the daunting,  
Scary, mucky path to get to the other side?  
Or do you turn back and wonder what if?  
I am going to keep going.*

- Smithy

# Contents

Company Information 2015	3
Sam's Welcome	4
Vision, Mission and Values	5
Chairperson's Report	6
Outreach Services	7
Emergency Accommodation	9
Permanent Supported Housing	11
Independent Housing and Property Development	13
Preventing Homelessness	15
Addiction Treatment, Recovery and Counselling	17
Participation, Development and Social Enterprise	19
Community Employment and Volunteering	21
Fundraising and Communications	23
Current Plans	25
Future Plans	27
Governance and Quality Standards	29
Financial Information	31
Thank You	33

*\*Figures included in this report are based on numbers accessing Dublin Simon Community's services in 2015. Some people may have accessed more than one Dublin Simon Community service.*



# Company Information 2015

## **Directors**

Kevin Loughran  
Dympna Dolan  
Padraig McKeon  
Michael McDermott  
Liam Halpin  
Seamus Kearney  
Sharon Cosgrove  
Niall Saul  
Phillip Flynn  
Roma Burke (Appointed 20 March 2015)

## **Secretary**

Martin Hannigan

## **CEO**

Sam McGuinness

## **Company Number**

32955

## **Charity Number**

5963

## **Registered Office**

1-2 Cope Street,  
Dublin 2.

## **Auditors**

JPA Brenson Lawlor,  
Brenson Lawlor House,  
Argyle Square,  
Morehampton Road,  
Dublin 4.

# Sam's Welcome



*Another year has passed and tragically the homeless and housing crisis is now at its absolute worst. At this time there are over 2,900 adults and 2,000 children in emergency accommodation in the Dublin region alone, some long term. Almost 1,000 families are currently facing homelessness,*

*many accessing hotel rooms with no areas to cook or clean, and often just a bed to share. Still more than 100 people are sleeping on our city's pavements and in parks. There are no places for these people to move onto and meanwhile the trauma and stress will have a dramatic and everlasting impact on their lives.*

**We worked with over 3,500 men, women and children across Dublin, Wicklow, Kildare and Meath to find ways of ensuring positive outcomes for our clients in 2015, providing more people and families with secure homes of their own.** Due to our Capital Development fund investing in housing units and our Housing Management service, set up towards the end of 2014, we have resourced and managed 94 units of accommodation in the year. By the end of 2015 we had increased our housing stock to provide 346 beds and had housed 198 adults and 27 children across our supported and independent accommodation. Each of our new properties are carefully selected and refurbished, for suitability to our client needs, ever mindful of the fact that the solution to homelessness is not just about providing a roof over people's heads, but also creating a physical environment that they can call home, one based in a community setting where they feel inspired to move forward with their lives.

We also expanded our treatment and recovery programmes where the supports offered are led by the client and the approach is adapted depending on their own experiences, their family situation, their community and society. Across our emergency and supported housing, treatment and recovery services, our teams worked on introducing new programmes such

as Personal and Professional Development and Community Employment to help our residents set goals for their future and put plans in place to achieve them. Our outreach expanded to offer visiting in-reach advice and support to people accessing temporary accommodation services and we also expanded the drop-in clinics provided by our prevention services.

**In 2015, we focused on planning our future. We developed our new organisational strategy, outlining what Dublin Simon Community aims to achieve over the next five years and the steps we need to take to get there.**

Throughout this process we must ensure our plans are sustainable and that we are creating environments for our clients and residents where they can develop the skills they need to move on from homelessness for good.

Our successful procurement and sourcing of properties and accommodation gives people security and stability and means we can help them plan the next steps in their own lives. We must ensure that there is consistent access to physical and mental health, addiction, life-skills, training, employment and a community network to ensure they can sustain a home of their own, if and when their housing needs are met.

As we embark on our new strategy, and for the years to come, we must remember to continue creating environments where our clients and residents feel nurtured and a part of something. Together with the kindness of our supporters like you, adults and children who have faced the heartache and uncertainty of living without a home can access the health, education and wraparound services they need to leave homelessness behind. **You are giving them back their belief in themselves with the courage to reach their full potential and plan their own future with a community behind them.**

**Sam McGuinness**  
Dublin Simon Community CEO

# Vision, Mission and Values 2012 - 2015

*Dublin Simon Community is focused on providing supportive services at all stages of homelessness and providing supportive alternatives to people living in despair, enabling them to rebuild their lives and empower them to secure a safe home of their own.*

## **Our Vision**

Making home a reality

## **Our Mission**

Empower people to access and retain a home, by providing housing, prevention and targeted interventions through advocacy and partnership.

## **Our Values**

### *Community*

We provide those associated with Dublin Simon Community with a sense of involvement, inclusion and belonging.

### *Respect and Empowerment*

We are committed to showing respect to each other. Responsible conduct is expected from everybody in our community. We are also committed to creating an environment where volunteers, staff and those who use our services are empowered to improve their lives and that of their local communities.

### *Excellence and Innovation*

We provide services that are cost-effective, to best standards and we are constantly pioneering new and innovative ways of providing our services.

### *Accountability and Integrity*

We operate with transparency so that we are accountable for actions, individually and collectively. We are equitable and fair in all our dealings.

# Chairperson's Report 2015



*2015 saw the housing and homeless crisis escalate to catastrophic levels. As rents remained unaffordable and the gap between Rent Supplement and market rents continued to widen, more and more children, families and individuals were pushed into homelessness.*

The number of families accessing emergency accommodation in the Dublin region alone increased by 106% in the year, with the number of children increasing by 94%.

By December 2015, 3,915 adults and children were trapped in unsuitable temporary accommodation with at least 152 more sleeping on our city streets or taking shelter in the Night Café. This was an unacceptable reality for all of us in the sector to face, as we worked to support people who came to us in desperate need of help.

**As the crisis continued to escalate, Dublin Simon Community turned our attention to how we can implement further supports and expand our services to meet this extraordinary demand.**

From 2012-2015 we significantly developed our housing provision through a mixture of acquisition or leasing/management using our Housing Development Fund, made up of generous donor gifts together with Capital Assistance Funding, bringing our total accommodation provision to 346 units.

As our previous organisational strategy 2012-2015 came to an end, we undertook a number of workshops involving our stakeholders, board, staff, management, volunteers and people who access our services, to develop a Rolling Strategic Plan for 2016 to 2020. Our new Rolling Strategic Plan will operate over five years and will be updated annually with adjustments and changes being made where necessary. We clarified the contribution we make in the areas

of homeless, housing and health, developed 'statements of intent' and identified the strategic objectives with action plans for how they will be achieved.

**As Board members it is our responsibility to oversee this plan, ensuring its effectiveness and its positive impact on the lives of the people we serve.**

Dublin Simon Community is fully committed to upholding the highest standards of Corporate Governance and to providing the best quality service possible to all stakeholders, particularly those who access our services and those who donate. We believe that maintaining these high standards is integral to demonstrating accountability to those who fund and support our work. The Board also ensures that the organisation is proactive and responsive in order to achieve our goals.

On behalf of the Board and everyone at Dublin Simon Community, I would like to thank all our supporters for their continued belief in the work that we do. My particular commendation goes to our clients and residents. We are continuously inspired by your perseverance and determination to overcome the toughest of times and plan a secure and positive future for yourselves and those close to you.

**Kevin Loughran**  
**Chairperson**

# Outreach Services

*Dublin Simon Community Outreach Services consist of our Rough Sleeper Team, Harm Reduction and Emergency Backpack Needle Exchange services and a Mobile Health Unit. We also provide a volunteer-led Soup Run and Social Club. Contact with these teams is the first step for people who are rough sleeping to move from the danger and uncertainty of the streets to supported accommodation or independent living. In 2015, the teams worked on expanding their services and identifying new ways to link in with clients.*

## **Rough Sleeper Team**

In 2015, the Rough Sleeper Team established an in-reach service providing support to clients who accessed one night only accommodation through the Freephone service. The team began piloting an in-reach programme in the Bru Aimsir hostel on Thomas Street, a 101 bed unit operated by Crosscare. The team visited three mornings a week providing advice and support to clients. This included assistance in filling out medical card forms and housing applications, advocating on behalf of clients to help them access accommodation and referring clients into Simon's Counselling and Detox services. As a result of assisting clients with medical card application forms, they secured a number of clients with a mainstream GP service. The team also worked with Crosscare to successfully refer a number of clients from rough sleeping into Assertive Engagement Programmes.

## **Mobile Health Unit**

The Mobile Health Unit operated in partnership with Safetynet and continued to run three

evenings per week providing free GP care to people experiencing homelessness. 2015 saw the introduction of a Counselling Service, operating from the Mobile Health Unit once a week providing confidential emotional support to clients. Having a counsellor at the Mobile Health Unit each week meant that many clients who might be frightened of engaging with a counsellor inside a building can make initial contact with a counsellor in a familiar environment. It removes some of the barriers to accessing this support, thereby paving the way to a meaningful and long term counselling relationship.

## **Soup Run**

The volunteer-led Soup Run continued to operate 365 nights of the year, offering tea and coffee, food, activities and respite to our clients, along with the friendly faces of our volunteers. A breakfast run was introduced on Friday mornings operated by four Part-Time Volunteers. This starts at 6am running to 7:30am, handing out pre-made breakfast packs of cereal bars, fruit, porridge and tea or coffee for clients waking up who had been sleeping rough the night before.

## **Social Club**

The purpose of the Social Club is to encourage people who are homeless to get involved in meaningful activities and to combat the loneliness and isolation that our clients report as being part of their experience of homelessness. In 2015, the Club increased its activities which included film nights, a Book Club, African drumming lessons, arts and crafts classes and the Social Club beach barbecue held in July.



**In excess of 150 individual clients** each month were provided with housing assistance, harm reduction and medical services by our Rough Sleeper Team.



**845 GP consultations** took place at our Mobile Health Unit, operated in partnership with Safetynet, providing free primary care to people experiencing homelessness.



An average of **470 harm reduction emergency needle exchange packs** were issued each month.





Soup Run Volunteer Claire supporting one of our clients

***“I know if I need anything all I have to do is meet with the Simon Community and they help me.***

***“The Rough Sleeper Team got me a suit for my Mam’s funeral last minute and I appreciated that so much. I went looking like my Mam’s son and not as a homeless person”***

- Outreach Client



A peak of **130 people** was counted sleeping rough on one morning in September 2015 in the inner city on our Early Morning Street Counts.



More than **60,000 hot drinks, sandwiches and snacks** were distributed by our Soup Run and Social Club.



**25 clients** accessed each evening of our twice weekly Social Club.

# Emergency Accommodation

*Dublin Simon Community's Supported Temporary Accommodation Services provide short term accommodation and needs based support for men, women and couples who are homeless. In 2015, we expanded our provision of emergency accommodation when we took over operation of Maple House from Dublin City Council. We also continued to work with the Salvation Army to operate a night shelter in North Dublin.*

## Harcourt Street

Our Supported Temporary Accommodation on Harcourt Street continued to provide keyworking support, nursing services, counselling services, social activities and meals to residents throughout 2015. There was continued focuses on improving the environment within Harcourt Street with large scale Room to Improve projects run with corporate volunteers, most noticeably in the Harcourt reception area. Harcourt Street continued to liaise with Maple House in order to ensure the model of service delivery is consistent across the two services.

A staff member from our services was assigned to the Place Finder team with Dublin City Council. The Dublin Place Finder Service helps support households who are homeless to find a tenancy using the dedicated Housing Assistance Payment (HAP) Scheme which was piloted during 2015. The team support people experiencing homelessness across the sector to find and secure permanent accommodation and will continue to do so throughout 2016.

## Maple House

Dublin Simon Community took over Maple House Supported Temporary Accommodation from Dublin City Council on 31st July 2015. The team worked on developing key working relationships with clients who had already been accessing the service and introduced our lead working support system, residents' meetings, group work and health and wellbeing checks so that the service could act as a stepping stone into permanent accommodation. The service offered art classes, health and wellbeing groups and game nights on a weekly basis and in 2016 will be actively increasing these learning opportunities for clients.

Maple House was previously an all male service so towards the end of 2015 work and planning began to accommodate female clients and couples in early 2016.

The United States Embassy and Localise collaborated with Maple House over Christmas to improve the building and donated Christmas presents for all the clients. The United States Ambassador to Ireland, Kevin O'Malley, also visited the project over this period.



**689 people** were accommodated in our emergency housing with care plans focusing on physical and mental health, life skills, education and employability.



**90% of clients** were long term homeless who accessed our emergency accommodation.

**31-49**

**71% of clients** were aged 31-49.

### North Dublin Shelter

In partnership with the Salvation Army, Dublin Simon Community operated a 25 bed night shelter in North Dublin where beds were provided on a one night only basis. Last year, the two organisations continued to work very effectively together in this first-time partnership. Our collective approach of ensuring that everyone we work with is treated with dignity has been strongly echoed in feedback from our clients.

In 2015, the Mobile Health Unit began to make regular trips to the service. There were a number of screenings carried out and referrals made to other services. The team also engaged the NHS Mobile Health Unit to visit from the UK and carry out screenings for tuberculosis.

This was a great example of interagency and cross border work. The service worked with Food Cloud and our own Food for Simon Programme to ensure sufficient quantities of food and supplies were provided to all clients throughout the year.

One particular success story from this service was one client, who had been frequently accessing the shelter, was supported by staff in finding a path out of homelessness. This client was determined to find employment and applied for several jobs while at the service and was eventually successful. He has since moved on from homelessness and opened his own business employing three people.



Volunteers from Localise and The United States Embassy with Ambassador Kevin O'Malley at Maple House



**821 referrals** were made to private rented, or local authority accommodation, treatment or medical services.

***"It's a roof over my head. It's a handy service to have, you get well looked after. Next year hopefully I will be housed and then I'll do my best to get back to work. They really do try and get you back on your feet in here."***

- Simon Resident

# Permanent Supported Housing

*Across our Permanent Supported Housing Services throughout 2015 the teams worked on expanding the programmes and activities for residents. All programmes were based on the needs and wants of the residents and each service planned and organised fun and interactive ways to achieve these objectives and ensure maximum participation and benefits.*

## **Kildare, Wicklow and Meath Housing**

In May, Kilmantin Hill in Wicklow Town, previously operating as temporary accommodation, changed to Long-Term Supported Housing with Personal and Professional Development Programmes rolled out for all residents. Four residents completed full-time education courses, with two residents taking up employment during the year. All residents were trained in Fire Safety and Manual Handling.

A Housing First Project was opened in Wicklow and 20 properties were secured in Kildare to provide long term tenancies to people who have experienced homelessness.

## **High Support Housing**

Dublin Simon Community took over Oak House Permanent On-site Housing Support from Dublin City Council in July 2015 and the team introduced supports and structures such as keyworking, case management, residents meetings and social activities programmes.

Adjoining apartments to Chester House were made available to provide accommodation to one single person and one couple. During the winter any rooms that were temporarily vacant were used as part of the Cold Weather Initiative. The team introduced a Programmes Worker role to develop and review programmes, increase participation and implement new programmes such as the Personal and Professional Development Programme.

At Riversdale House, the team continue to work closely with the community to ensure a smooth transition for our residents and neighbours. Both Local Monitoring Committees and Neighbourhood Watch meetings occurred regularly with local stakeholders. Many new and innovative programmes were introduced including the Personal and Professional Development Programme, Peata Pet Therapy Dog Visits and daily programmes and activities.

## **Room to Improve**

Through the year several Room to Improves took place across our housing services to refurbish the dining room areas, bedrooms, communal spaces and gardens. Room to Improve is an initiative which works with our corporate supporters who volunteer their time to redecorate a room or area in one of our services and help create a homely and welcoming environment for our residents.



**171 people** who lived in our permanent supported housing received assistance with life skills, health and welfare, education and training.



**68% were male** and **32% were female.**



**Over 230,000 meals** were provided to clients across our residential services, with our kitchens providing nourishing food to improve their health and wellbeing.



### Satellite/Hub Services – Medium Support and Independent Apartments

Our Satellite/Hub Model continued to operate in 2015. In Blessington Street the team implemented the Personal and Professional Development Programme and fortnightly groups focused on capacity building. One resident from Blessington Street began working for Dublin Simon Community on the maintenance team as part of the Community Employment Scheme and another accessed mainstream Community Employment in a recycling company. A second couples' apartment was introduced in Dorset Street, increasing the capacity to 18. The team facilitated the use of one of the apartments for the Dublin Cold Weather Initiative. Residents conducted regular neighbourhood clean ups and two residents' art work was published in the annual Scrappy But Happy book.

Canal Road, together with our Clanbrassil Street apartments, ran an active schedule of activities this year such as weekly group work, cookery lessons, photography classes, art classes, pampering days, barbecues and the Personal and Professional Development Programme, operating as an additional support alongside keyworking.

One of our residents who had experienced homelessness on and off for over 20 years secured an adapted apartment from Dublin City Council and is now flourishing and living independently.

### Primary Care Nurse Co-ordinator

The Primary Care Nurse Co-ordinator is a new position set up to improve the primary healthcare needs of our residents in supported housing. This came from an identified gap in service provision for residents accessing public health services and a lack of continuity of healthcare. The role ranges from clinical assessment, case review support, programme development, education, health promotion and client advocacy. The Nurse works across six supported housing services and provides consultative support to services in Wicklow. Dublin Simon Community is the first homeless service in Dublin to have a Primary Care Nurse Co-ordinator.



Resident Ann with Housing Manager Vicky



Resident working on a mural at Chester House

***“We pride ourselves on creating an inclusive and positive atmosphere for our residents, even during difficult times. Whether it is a bright hello in the morning or more comprehensive support, we are determined to be available and positive with clients at all times.”***

- Housing Manager

# Independent Housing and Property Development

*We continue to source and acquire further properties to provide permanent homes for people and families and move them on from homelessness for good. In 2015, we focused on expanding our Housing Management Service as well as our capacity for the refurbishment and maintenance of our properties to provide the most appropriate and positive environments for our clients.*

## Housing Management Service

Dublin Simon Community acquired several new properties during the year including Francis Court, Capel Street, Moss Hall and James Street.

Our Housing Management Service, which was set up in 2014, took shape in 2015. The team provide services such as housing allocations, pre-tenancy, training, independent living support, estate management, repairs and maintenance for all independent accommodation managed by Dublin Simon Community.

## Refurbishment and Redevelopment

During the year we began our redevelopment of our premises on Sean MacDermott Street from a supported housing service to 13 Independent Living Units with staff and communal areas. Please see Pages 25-26 for further information on our progress in our Sean MacDermott Street service.

Refurbishment of five residential units in Wicklow Town commenced towards the end of the year to provide one three-bedroom house and four one-bedroom apartment units to people moving on from homelessness.

Our Enterprise Facility in Chapelizod was remodelled and refurbished to provide stock sorting areas for our shops, as well as a distribution centre and freezer storage for our Food for Simon Programme and storage areas for our repair, maintenance and fundraising departments.

## Repair and Maintenance

Procurement frameworks were set up for consultants and contractors for publicly funded projects. Together with our Corporate Fundraising Team and the generosity of our corporate supporters, the Repair and Maintenance Team facilitated 12 Room to Improve upgrades to residents' bedrooms, common areas and circulation areas, as well as significant landscaping works to Riversdale House, Roylands House and other facilities. We developed the mobile Repair and Maintenance Service with the procurement of our Peugeot Van. This gave the team increased reach and reduced the reliance on third party contractors. An asset management and stock condition process was established which will be rolled out in 2016.



**94 accommodation units** were allocated and managed by the Housing Management Service.



By the end of 2015 we had increased our housing stock to provide **346 beds**.



We had permanently housed **198 adults and 27 children** by the end of the year.



Volunteer team from Ikea taking part in Room to Improve

***“We have this tenancy for the rest of our lives; it’s a place to call home. We’re just getting there, slowly but surely.***

***“Things take time; I will make it a home for us. I think my son deserves it after everything he has gone through. Before we didn’t know where we were going to be next week. It’s a roof over our heads, that’s why I’m delighted.”***

- Simon Resident



Room To Improve with our corporate supporters saved **over €24,000** on maintenance works.



**796 Repair and Maintenance requests** were responded to across our services.

# Preventing Homelessness in Dublin, Kildare, Wicklow and Meath

*Throughout 2015 we continued to work with people facing the devastating impact of rising rents and reduced housing supply. Our Prevention Services in Dublin, Kildare, Wicklow and Meath worked with people at risk or moving on from homelessness, liaising with local county councils to keep people in their homes.*

## **Housing Support Service in Kildare, Wicklow and Meath**

Throughout the year the Simon Community working across Kildare, Wicklow and Meath strengthened relationships with Local Authorities, with two Simon staff working out of the Councils. Across the three counties the team distributed food hampers to families at risk of homelessness. In 2016, the teams will be expanding the support services through visiting support and advice for individuals and families who are at risk of becoming homeless, advocating to landlords or the County Council to help keep people in their homes. They will also continue to offer ongoing advice, support and early intervention to households at risk and information about tenant rights and responsibilities.

## **Support to Live Independently**

Our Support to Live Independently (SLI) teams worked with individuals and families to help them move out of homelessness, putting the necessary supports in place for them to maintain their new home. The service used the Davy Educational Fund to support our clients in accessing education

where they might have previously experienced barriers. One client completed his first year of engineering in DIT and another client continued his employment opportunities by sitting the FE1 exams through their access programme.

## **Visiting Tenancy Support Service**

In consultation with our funders, our Visiting Tenancy Support Service (VTSS) developed advice and information drop-in clinics to complement the case management services which we already provided. This was in response to the increase in the number of tenants of private rented accommodation who were finding themselves at risk of homelessness. This service was provided through weekly community-based drop-in clinics in each Dublin City Council area.

We built up valuable relationships with Dublin City Council staff which helped us to advocate for housing for the over 60s who were at risk of homelessness in the private rented market. We have succeeded to prevent a number of people over 60 from entering into homelessness. The team were also successful in advocating for funding for tenants in rent arrears in the private rental market and prevented a number of tenants becoming homeless due to financial problems.



**315 people** across Kildare, Wicklow and Meath received housing advice, settlement, prevention and outreach services so that they could secure a home.



We reduced the risk of **570 people** losing their homes through our homelessness prevention and resettlement services in Dublin.



**40 people** accessed educational opportunities through the SLI Davy Educational Fund.



### Child and Family Service

The Child and Family Service was established in August to provide a specialist support for parents and children, addressing the impact of homelessness or the circumstance that led to homelessness while focusing on community integration.

Linking the families to their local communities, while also creating opportunities for partnerships, will provide better outcomes for children and families. The main aim of working with the family is to empower parents by instilling in them the confidence and skills to provide good outcomes for their children.

This is a strengths based approach where we help them gain the tools necessary to work within the community with self-assurance.

The majority of the cases were referred by Simon staff who work with families moving out of homelessness and/or families 'at risk' of homelessness and in need of support in the areas of community integration, child protection, mental and physical health, behaviour, education, routine and finances. These support needs are met either by intense family support within the home or through referrals to the appropriate service such as the Family Resource Centre, PHN, Assessment and Intervention Team, GP or the Child and Family Agency (TUSLA).

### Child and Family Service



In **89% of VTSS cases** closed during the year, the tenancy had been successfully sustained on disengagement.



There are currently **12 active cases** in the Child and Family service.

***"When I got my own place my keyworker came to visit me every week for six months which was vital."***

***"He helped with managing bills, linking in with my community and accessing courses, I can talk to him about everything."***

- SLI Client

# Addiction Treatment, Recovery and Counselling

*Our wraparound Treatment Services give clients a safe environment and a secure base to develop hope, a sense of self, supportive relationships, empowerment, social inclusion, coping skills and meaning for their lives going forward. These services include Detox, Recovery, Addiction Specific In-reach Homeless Action Team, Aftercare, HIV Stabilisation/Respite and Counselling. These skills are vital to building the confidence people need to move on from homelessness. In 2015, the teams continued to develop new ways to provide more inclusive and integrated services to ensure positive outcomes for clients.*

## Detox

During 2015, the nursing teams of the Residential HIV Stabilisation/Respite Service and the Residential Alcohol Detox Service were integrated. This greatly enhanced service delivery as all nurses now work across both services and have enhanced their skills and competencies integrating policies, procedures and guidelines.

In June, a new manager was appointed with extensive experience of working with clients who have one or more addictions and has been a valuable addition to the service. New roles were also defined in the service including a Community Alcohol Detox Nurse and a Liaison Project Worker, to further expand the services available to clients in addiction treatment as well as to broaden the scope of support available both prior to admission and following discharge.

The Detox unit continued to facilitate 3rd year student nurses from the four year mental health degree programme at St Vincent's Hospital to undertake a four week specialist placement.

## Recovery

In 2015, our Recovery Programme was launched by the then Minister of State with special responsibility for the National Drugs Strategy, Aodhán Ó Ríordáin, to coincide with seven members of the Recovery Team qualifying as Community Reinforcement Approach Therapists. The Recovery Programme is part of a low-threshold, specialised Addiction Regional Supported Temporary Accommodation unit for people affected by homelessness, the only service of its kind in Ireland. It is six months in duration and is focused on providing a supportive, comprehensive programme at the early stages of Addiction Recovery. The Recovery Programme is led by the client and the approach is adapted depending on their own experiences, their family situation, their community and society.

The Recovery Team also lowered the threshold in relation to the admission of clients who have completed a community benzodiazepine detox, clients who are on prescribed medications and clients who are engaged on methadone programmes, so that the service was more accessible to people who needed it.



**699 people** accessed our wraparound addiction treatment, recovery and counselling services providing a safe environment to rebuild their lives.



**96% of clients** accessing our Stabilisation/Respite service were successful in engaging with an anti-viral clinic when they left.



**Clients received over 1,700 hours of 1:1 counselling and mental health support** from Sure Steps Counselling who work across our services.

***“I am so grateful to my counsellor for her invaluable support along my journey thus far and for being such a good listener and for never having judged me. This has been the first time in my life that someone has listened to me in a non judgemental way and has accepted me for who I am, which means more to me than anything.”***

- Counselling Client

### **Addiction Specific In-reach Homeless Action Team**

An Addiction Specific In-reach Homeless Action Team Service (HATS) was set up in January 2015. The aim of HATS is to prevent clients exiting addiction treatment and falling into homelessness. This team provided the service to addiction treatment providers such as Coolmine, Teach Mhuire and in the HSE the service was provided to Keltai, Rehabilitation Integration Service, Soilse and Cuan Dara.

Each individual's transition to and through recovery is a deeply personal process and is generally seen as a personal journey rather than a set outcome. The team support people who want to find their next step, whether that be to further treatment, long-term Supported Temporary Accommodations (STA), private rented or a facilitated return to friends and family. Clients attend one to one keyworking with information clinics are provided weekly to discuss issues such as registrations, changing local authorities, private rented sourcing, Housing Assistance Payments and STA placements. The team work with clients on an individual basis to address their particular needs and to help support them with any barriers they may face in their move-on options.

### **Clinical Governance Structure**

In 2015, our clinical services expanded and became more sophisticated while remaining low-threshold. A robust Clinical Governance Structure was implemented following a period of research which included a review of external documents, processes and service visits. We recruited a Clinical Lead and set up a Clinical Governance Steering Group comprising of internal and external stakeholders including clients.

### **Addiction Support Aftercare**

The Addiction Support Aftercare Programme provided post treatment clients from in-house treatment services, Prevention, SLI and external treatment facilities. The Programme addresses addiction and supports prevention in homelessness. Aftercare Addiction Support Workers continued building on the progress made in Recovery in order to sustain a positive lifestyle following the Community Reinforcement Approach modality. The development of the WASP – Anger Management Programme was undertaken and incorporated into the aftercare treatment programme along with the training and implementation of mindfulness.

### **HIV Stabilisation/Respite Unit**

The HIV Stabilisation/Respite Unit increased its beds in 2015 from eight to nine beds. Safetynet continue to provide GP cover to the unit. The Nursing Team was integrated with the Detox Team. We extended our service provision to include clients living with blood borne viruses and admitted our first Hepatitis C positive client at the end of the year. The team put a lot of effort into seeking out and improving the availability of holistic and complementary therapies to our client group.

### **Simon Sure Steps Counselling Service**

The Sure Steps Counselling Service saw an increasing demand from clients seeking emotional support for a kaleidoscope of presenting needs. To meet this demand the service began accepting referrals from a number of external homeless service providers and introduced a fully accredited counsellor operating from our Mobile Health Unit one night per week. A six week counsellor-led emotional wellbeing group programme was introduced across a number of Simon services. The Counselling Service also became a student placement centre for Trinity College PhD counselling psychologists.

# Participation, Development and Social Enterprise

*Our Client Involvement, Literacy and Personal Development, Health and Wellbeing services continued to provide opportunities for clients to expand and develop their skills, education and employability throughout 2015. Our Simon Shops also continued to operate under the Social Enterprise model, providing both volunteering, education and employment opportunities for people who have accessed our services, as well as generating funds and providing much needed clothing and other items for people in our residential services.*

## Client Involvement

In 2015, there were a total of 22 clients involved in the Client Action Group, which is made up of current and former clients. The Group meets monthly and give input to Dublin Simon Community's services. The Client Action Group organised and facilitated two Speak Outs in 2015 where clients came together to have a voice and influence decision makers.

## Health and Wellbeing

The main focuses of our Health and Wellbeing service is personal training, group exercise, sports/health related events, holistic therapies and health promotion. Sport and exercise are used to foster a sense of community among participants, with clients training together and supporting each other in achieving personal goals.

In 2015, Health and Wellbeing introduced a weekly Swim Club and Gym Club. Football training took place each week and was open to all clients. The team also entered the Street Leagues tournament.

## Simon Shops

In 2015, the Simon Shops supported four Peer Volunteers who are part of the Client Peer Volunteer Programme to get experience and training in the shops. One of these volunteers went on to become a staff member within Dublin Simon Community. The shops provide a real work experience environment and training for clients or former clients of homeless services.

Our warehouse at Chapelizod was developed to sort clothes for the shops and improve our sorting policy. This allowed us to work with more corporate companies and expand our stock for the shops by inviting them to have a fun team day sorting Simon's stock while providing us with much needed support.

Staff and volunteers from our Shops participated in the Retail Operations Course and graduated in June. This course was developed in partnership with DIT and the delivery was tailored specifically for our charity stores.



**254 people** expanded and developed their skills, education and employability through our Participation and Development services.



Health and Wellbeing held **94 Group Sessions** during the year.



Over **500 literacy classes** took place.





Resident Michael receiving his certificate from Majella



Members of the Simon Football Team

### Literacy and Personal Development

Literacy and Personal Development is an area that provides one on one literacy classes with a qualified tutor together with meaningful activities and continued to expand during 2015. Literacy classes involve developing listening and speaking skills, reading, writing, numeracy skills and using everyday technology to communicate.

The Personal Development area focuses on meaningful activities including art, photography, dance, music, drama and creative writing.

Our 5th annual Scrappy but Happy book showcased the creative work of our clients and was launched in the autumn. We also held an annual recognition event which acknowledged the participation and efforts of our clients.

The Dublin Simon Community Dance group was developed giving clients and volunteers the opportunity to work with the Dublin Youth Dance Company. A Book Club for clients was set up with writer Maeve Devoy as part of the Literacy and Personal Development Programme.



**80 certificates** were given out at our Client Recognition Event.



The Client Action Group had **22 members** throughout the year.

***"I thought I was too old, that I'd never know how to read, I was so wrong, I am getting better and better each week and I'm loving it."***

- Simon Book Club Member

# Community Employment and Volunteering

*In 2015, we commenced the Community Employment Engagement Project which is an innovative Community Employment Scheme and a partnership between Dublin Simon Community and the Department of Social Protection. Our Full-Time and Part-Time Volunteers continued to work alongside professional staff across our range of services. During the year we also introduced further opportunities for people to get involved in volunteering such as our transition year programme.*

## Community Employment

The Community Employment (CE) Engagement Project is a one of kind initiative as it is the first ever Community Employment Scheme which is solely available to people over the age of 18 who are accessing homeless services. Multiple barriers into employment can exist for people who have experience of homelessness and moving into employment can often be a period of huge challenge and change. The Project is designed to break people's experience of unemployment through an introduction to, or return to, the routine of work and to assist people in enhancing and developing both their personal, social, and technical skills. Each employee on the CE Engagement Project has an Individual Learner Plan which includes accredited training and allots time to work on issues such as accommodation and housing, mental and physical health, addiction and treatment, and social inclusion and involvement.

## Volunteering

Our Full-Time Volunteers worked across our services. We again had placements from Ulster University and EVS Volunteers from Germany and in addition in 2015 we hosted students from Rochester in New York and Quebec in Canada.

In May 2015, 58 volunteers from Dublin, Cork and Galway Simon Communities graduated having completed the DIT, Continuing Professional Development Certificate in Volunteering.

Part-Time Volunteers worked across our Soup Run, Social Club, Counselling Service and our Shops. This year also introduced new opportunities for people to volunteer, with placements for a volunteer gardener in Chester house and a volunteer physiotherapist and beautician for residents in Riversdale House.

The Dublin Simon Community Transition Year Programmes give students the opportunity to work in services such as Fundraising, Supported Housing Services, Simon's Shops, our Volunteer Office and Participation and Development. All students are provided with an induction, supervision and an evaluation and are recognised at a Graduation Ceremony in the spring.



Our new Community Employment Engagement Project employed **8 people** in 2015.



**95 Full-Time volunteers** came through the Full-Time Volunteer programme in 2015.



**Over 124 Part-Time Volunteers** operated our Soup Run.



Simon Volunteer Carla at Áras an Uachtaráin

Dublin Simon Community volunteers proudly attended a reception hosted by President Michael D. Higgins and Sabina Higgins at the Áras an Uachtaráin on St. Patrick's Day. President Higgins thanked the volunteers and praised their dedication in supporting people who are experiencing homelessness, saying they provide a "light in the darkness of many difficult lives".



The Transition Year Programme saw **52 students** complete their weeks' placement in 2015.

***"There are the clients who tell you they live for the Social Club. That those few hours are the highlight of their week. Where people know their names and they get asked how they are. Seeing these people you realise when you do voluntary work, it's not working for free. You just get payment in a different form, worth much more than the one you can buy stuff with."***

- Social Club Volunteer



# Fundraising and Communications

*Dublin Simon Community would like to say a huge thank you to all our donors and supporters in 2015. From the smallest to the largest gift you gave, by organising an event or volunteering your time, means that we are able to respond where we are needed. Because of you, we can continue to open our door to people and families, giving ongoing support to help them along the path out of homelessness.*

## Events and Community Fundraising

A group of cyclists took part in a cycle across Europe in June 2015. The event, entitled *Head2Head*, saw close to 50 cyclists battle the hills of Spain and raise much needed funds for Dublin Simon Community.

The annual *Simon Fun Run* celebrated its 32nd year on 3rd October in the Phoenix Park. Over 3,000 people attended or took part in the five mile run and family festival. Our *Simon Fun Run* is made possible each year by the hundreds of committed volunteers who helped organise traffic junctions, start and finish lines, kids' races and activities and the many companies that donate goods and supplies for the day supported by 2015's sponsors Deutsche Bank, Hamleys Toy Store, 98FM and the Irish Daily Star. We also had some great music from the spectacular group The U-Band.

*Sing for Simon* was a great success with groups performing to raise funds for the Simon Community in numerous shopping centres, Christmas markets and streets around Dublin, Kildare, Wicklow and Meath.

The seventh annual *24-Hour Simon Carolathon* took place on Grafton Street on 18th – 19th December with special guests such as the Maynooth Gospel Choir, the Dublin Gospel Choir, the Lucan Gospel Choir and Vogue Williams with the Gaiety Theatre and Brooks Hotel providing invaluable support on the night. The Ryan Family were out again on Christmas Eve, followed by Glen Hansard and friends for the Annual Busk.

## Corporate Fundraising

The 2015 *Simon House of Cards Appeal* was a huge success, raising over €540,000 for Simon Communities across the country with over 250 companies taking part. The appeal culminated in the spectacular *Simon House of Light* projection show with the Lucan Gospel Choir opening the event followed by music groups Keywest, Ryan Sheridan, Hermitage Green, Ross Breen, Cry Monster Cry, Jamie Harrison, and Wyvern Lingo. All of the entertainment helped reach a new demographic, whilst keeping the Christmas theme alive.

A special thank you goes to The Irish Times, Irish International, the Powerscourt Townhouse Centre, Hamleys Toy Store and all of the local businesses on South William Street whose critical help, generous support and leadership make this appeal possible. The 2016 *Simon House of Light* will take place 8th - 10th December, from 5.30pm each evening. Visit [www.simonhouseofcards.ie](http://www.simonhouseofcards.ie) for details on how to get involved.



Thank you to over **3,000 supporters** who attended or took part in the Simon Fun Run.



Over **€24,000** was raised at our annual 24-Hour Simon Carolathon.



Our Food for Simon programme has achieved **€1.3 million** in cost saving since it began in 2009.





Vogue and Glenn at the Simon 24-Hour Carolathon

The Business Journalists Association of Ireland (BJAI) raised over €40,000 for Dublin Simon Community at their annual Corporate Challenge quiz. This was the 15th year that the Corporate Challenge quiz took place, raising over €450,000 since it began. ABP Foods were the overall winners of the quiz, walking away with the Waterford Crystal Trophy.

Throughout 2015 our *Workplace Fundraising*, *Share Your Skills*, *Room To Improve* and *Stock the Shops* programmes went from strength to strength with volunteers from businesses taking time out to make a difference to our services.

Last year we introduced further ways for teams to get involved with *Stock Sorting Days* and *Treasure Hunt for Simon*.

#### **Communications and Media**

Our Communications and Media continued to develop in 2015. We would like to sincerely thank those media outlets who chose to highlight our work and the many clients, residents, volunteers and staff who have represented Simon throughout the year. These stories help us to demonstrate our success as we continue our work to move people out of homelessness into a home of their own.



We received a **37% increase** in our coverage across print, broadcast and online media.

***"I always look back and to know the money we raised got people food and shelter brings happiness to my heart. I feel proud I did my share for those who have nothing, year after year!"***

- Simon Fun Run Volunteer

# Current Plans

## Sean MacDermott Street House – Paving the way to Independent Living

Our house on Sean MacDermott Street was originally a 21 bed high support housing unit. In recent years it had been deemed not fit for purpose and was at risk of closing. We approached Dublin City Council with our plans to redevelop the building to provide a sustainable home for new residents and they approved our proposal. Previous residents moved to new accommodation towards the end of 2014 and work got underway.

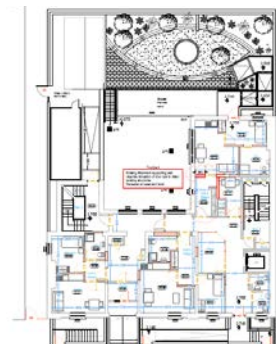
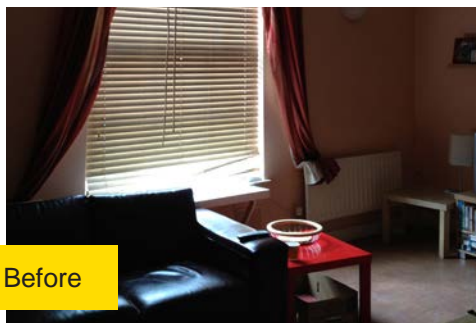
During 2015, using some funds from our Capital Reserve and a large contribution from a valued donor, we transformed the previous dreary accommodation into 13 bright and spacious independent living units which will accommodate up to 17 people helping them progress out of homelessness.

Sean McDermott Street is based on a medium supported housing model. It will provide long-term Supported Accommodation to individuals who are unable to sustain independent accommodation. The complex now comprises of 13 independent living units, a mix of one and two bed apartments that contain an open plan kitchen cum living areas, double sized bedroom(s), a bathroom and storage space.

Each resident receives support with day-to-day life skills, health and welfare, education and training, while support staff also provide assistance with addressing the issues of loneliness and social isolation. The house provides a permanent home for all our residents for the rest of their lives or until they are ready to move onto fully independent living. It is only with the kindness and generosity of our supporters that projects like this are made a reality.



Sean Mac Before



Planning our New Service

***“I feel brilliant having my own place. Even to get the key to my own front door, my own cooker. It means everything. I’m comfortable now I have more security. I know I can stay here and that I’m not going to be moving into another place. That has happened to me for years.***

***“Sometimes you move into a place, and you don’t know if you could be moving out the next day. In here it could be for life or it could be until I’m ready to move out on my own.”***

- Sean MacDermott Street Resident



Sean Mac After



### How You Can Help?

We are committed to providing long-term housing through our *Capital Development Fund*. As the housing and homeless crisis escalates we are committed to increasing our housing capacity and respond to the urgent need. We are focused on acquiring properties that will move vulnerable people off the streets and out of unstable, temporary accommodation and into permanent homes.

We cannot stop; we must make a bigger impact, one that will change how we respond to homelessness and solve the housing crisis.

To help us make the biggest impact, contact Kelly Crowley at [kelly@dubbsimon.ie](mailto:kelly@dubbsimon.ie) to hear more about how the Simon Community is facing this crisis head on and how you can be part of the solution.

# Future Plans

*We never expected the homelessness and housing crisis to escalate to the tragic levels that is has. Together with our colleagues in the sector and operating at the frontline, we must react in a way that is sustainable, so that people who are facing the most uncertain and unstable times in their lives get the supports that they need.*

As we continue to address this crisis head on, and in the years ahead, we have learnt through experience what the solutions are and what works. **We provide the highest standard of evidence based professional practices\* and operate good governance to ensure that our income from statutory funding and fundraising is allocated where it is needed most.**

We want to keep people in their homes and prevent them from becoming homeless or at risk, working with communities across Dublin, Kildare, Wicklow and Meath to identify the warning signs and intervene as early possible.

**We are determined to fulfil a Housing First approach, by sourcing and acquiring fit for purpose accommodation and growing our housing stock, both individually and in partnership with Local Authorities and Approved Housing Bodies.** This will create sustainable homes for people and families whether they are in need of ongoing support or are able to live independently.

Our low-threshold Addiction Treatment, Recovery and Counselling Services continue to create the best possible environment with wraparound supports for clients so that they can progress through recovery and move on from addiction. We hope to expand the reach of these services in the coming years in the provision of additional treatment and post treatment beds.

**For people currently living on our streets, or enduring the instability of emergency accommodation, we must ensure they are moved out of a homeless situation as quickly as possible, while helping to reduce any detrimental effects on their physical or mental health.**

We will continue to bring our services to people wherever they are at. Even though their bed for that night may be uncertain, we will ensure that the supports they need are available to them, whether they are in need of Outreach, Medical, Treatment, Counselling or Housing Services, or someone to advocate on their behalf.

With our Participation, Education and Employability services, we want to create pathways out of homeless services, helping our clients plan and sustain a future for themselves.

**Not one of our services operates in isolation. Like the plans of a building, each are intertwined and complementary.** We will

continue to work with organisations across the sector and beyond, with local authorities and with the Government, creating pathways across the counties we operate in so that our clients have access to whatever supports they need to find and to keep a home of their own.

*\*Our strategy is underpinned by organisational policies, governance, quality standards within the context of the evolving national/regional strategies, standards, policies and action plans on homelessness, housing and health.*

*These include:*

*Rebuilding Ireland - Action Plan for Housing and Homelessness - 2016*

*Programme for Partnership Government - May 2016*

*Government Strategy 'The Way Home: A Strategy to Address Adult Homelessness in Ireland 2008-2013.*

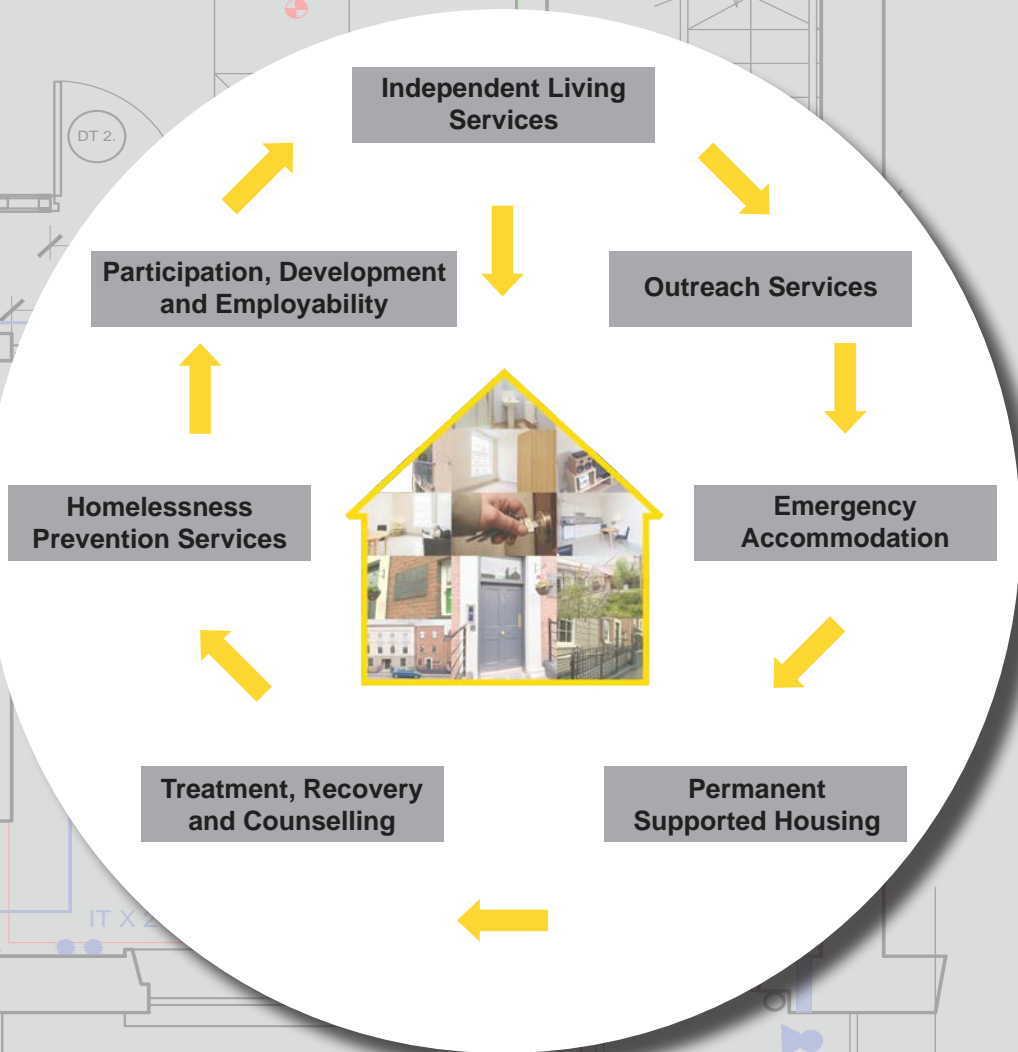
*Housing Policy Statement - June 2011*

*Housing Act 1988 and 2009 (as amended)*

*Mental Health - A Vision for Change – 2006*

*National Drugs Strategy 2009 – 2016*

# Our Services





# Governance

*Dublin Simon Community continue to uphold the highest standards of Governance. We believe that maintaining these high standards is integral to demonstrating transparency and accountability to those who fund and support our work. It also ensures that the organisation is proactive and responsive in order to achieve the goals of Dublin Simon Community.*

## **Our Board**

Dublin Simon Community is governed by a voluntary Board of Directors as per their memorandum and articles. It is made up of experienced and driven people in the fields of Human Resources, Management, Finance, Communications, Education and IT.

The Board is advised by three expert committees and is responsible for the overall control and strategic direction of Dublin Simon Community.

These Committees are:

**Audit and Risk** – Oversee financials, risk, audits, clinical governance, overall governance and legal requirements of Dublin Simon Community.

**Strategy and Policy** – Oversee the strategic policies and property decisions of Dublin Simon Community.

**Fundraising and Communications** – Oversee the fundraising and communications plans and policies.

The Board is committed to achieving high standards of governance. Board Members do not receive any remuneration or expenses in respect of their services to the charity. There have been no contracts or arrangements entered into during the financial year in which a Board Member materially benefited or which were significant in relation to the company activities

## **Recruitment and Appointment of the Board**

We currently have ten Board Members and can have a maximum of twelve. Our Chairperson serves for two years as does our Vice Chairperson who then replaces the Chairperson.

All directors are elected or re-elected by rotation at our Annual General Meeting (AGM) which takes place in May of each year. New directors normally join Simon by joining one of the committees with subsequent election to the board at the AGM or co-opted onto the Board. There were eight formal Board meetings during 2015. For a list of Members for 2015 see Page 3.

## **Senior Management Team 2015**

CEO, Sam McGuinness

Head of Housing and Property, Catherine Kenny

Head of Treatment and Enterprise, Majella Darcy

Head of Head of Finance and Corporate Services, Martin Hannigan

Head of Human Resources, Sheila Counihan

Senior Manager for Emergency Services, Sharon Commins

## **Risk Management**

Risk is managed in line with Dublin Simon Community's existing risk management framework. We have a Risk Management Policy as well as specific risk management strategies in the areas of health and safety, clients, finances and child protection.

Dublin Simon Community is committed to effectively managing its risk on a formal basis to support better decision making based on a clear understanding of risks and their likely impact. A framework is in place, consisting of a series of simple but well defined steps to support ongoing risk management and to raise awareness of risk and the need to manage it consistently and effectively across all levels of the organisation.

## **Risk Management Policy**

On a regular Quarterly basis, risks are formally identified, assessed and prioritised by senior management. Actions are proposed to mitigate risks and the results are submitted to the Board and Audit Committee along with a report from the Chief Risk Officer (Head of Finance and Corporate Services) regarding the overall risk management framework.

# Quality Standards

*Dublin Simon Community is fully committed to providing the highest quality service possible to all stakeholders, particularly those who access our services and those who donate. This commitment has been demonstrated by adhering to the highest standards of governance and quality.*

In 2015, we continued our focus on quality standards in the organisation:



Treatment and Enterprise services worked towards the **Health Information and Quality Authority (HIQA) National Standards for Safer Better Healthcare**. These are aimed at protecting patients and providing a strategic approach to improving safety, quality and reliability in health services.



Human Resources achieved **Excellence through People**. Since 2012, we have worked with the National Standards Authority of Ireland to continuously strive to improve our employee services by taking part.



The Volunteer Office achieved the **Investing in Volunteer Quality Standard**, awarded by Volunteer Ireland. This is the national quality standard for good practice in volunteer management.



Our Supported Temporary Accommodation services started self assessment on the pilot **National Quality Standards Framework** standard from the Dublin Region Homeless Executive.



Our Housing and Emergency services worked towards the **European Quality in Social Services (EQUASS)** standard. This is an initiative of the European Platform for Rehabilitation and aims to enhance the personal services sector by engaging service providers in quality, continuous improvement and by guaranteeing quality of services to clients throughout Europe.



**Housing Finance Agency**  
An Ghníomhaireacht Airgeadais Tithíochta

Our Housing and Property teams worked towards **Approved Housing Body certification** from the Housing Finance Agency (HFA). The HFA was established as a state-owned company in 1982 and provides loan finance to local authorities and Approved Housing Bodies (AHBs). The HFA requires Housing Associations to have robust Corporate Governance and clearly defined future development plans.



Fundraising worked to the **Irish Charities Tax Reform Group Statement of Guiding Principles** for fundraisers. The statement exists to improve fundraising practice, promote high levels of accountability and transparency by organisations fundraising from the public and provide clarity and assurances to donors and prospective donors about the organisations they support.

Our Finance department achieved **FRS 102 Financial Reporting Standard** from the Financial Reporting Council who is responsible for promoting high quality corporate governance and reporting to foster investment.

For further detail on our Quality Standards please visit our website:

[www.dubsimon.ie/AboutUs/GovernanceQuality](http://www.dubsimon.ie/AboutUs/GovernanceQuality)

# Finances 2015

## A Message from Sam McGuinness

Following the recent media reports I would like to assure you that funds donated to Dublin Simon Community do not pay any salary or pension top ups, nor do we provide company cars, bonuses or any other perks or entitlements. All staff are offered an optional, defined contribution pension scheme, the maximum contribution to which is 5%.

All staff have had a pay and increment freeze since 2008. My salary remains at €93,338.

We have also reduced salaries and paycales to manage our payroll costs. We do not, nor can we afford to, pay public service paycales and our pay levels are less than similar roles in the Public service. There are also no fees paid to our voluntary board members.

Through a series of measures, including Food for Simon, making our buildings more energy efficient to save on energy bills, managing our staff mix plus other savings, we have reduced our overheads.

Since 2008 we have seen our HSE grants reduced cumulatively by 22%, yet we continue to increase the quality and number of services we provide, in response to increased demand, to people who are homeless or at risk of becoming homeless.

We have only managed to do this by taking the measures outlined to reduce our costs.

We are continuously grateful for the generosity of Simon supporters. Through donations, fundraising events and campaigns, combined with the commitment of the business community we are able to satisfy the continuing demand for increased services in Dublin, Kildare, Wicklow and Meath.

Our aim at Dublin Simon Community is to empower people to access, secure and retain a home of their own by reducing the reliance on short-term emergency accommodation and providing permanent supported housing for people to sustain a home in their local community; and we know we can't do it alone.

If there is anything else that I can assist you with please do not hesitate to contact me. For more information please see our independently audited annual accounts, by JPA Brenson Lawlor, available on our website [www.dubsimon.ie](http://www.dubsimon.ie).

Your support is appreciated.



**Sam McGuinness**  
On behalf of Dublin Simon Community



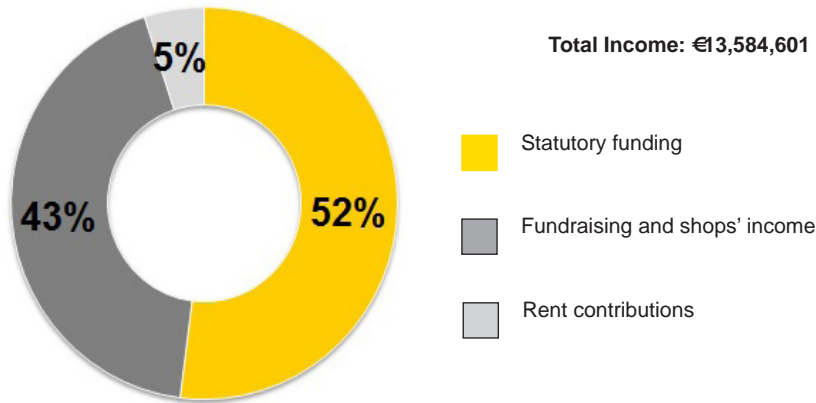
**Analysis of Financial Position 2015**

Our income increased from €12,519,761 in 2014 to €13,584,601 in 2015. This was mainly due to increased statutory grants relating to increased homeless services during the year.

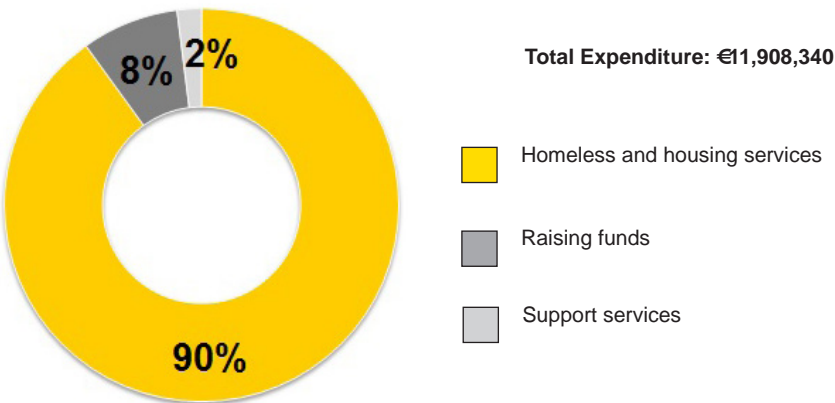
Related Expenditure has also increased from €11,495,138 in 2014 to €11,908,340 in 2015, primarily due to the increased services.

Our Balance sheet net asset value has increased to €15,085,926 due to the additional property acquisitions in 2015.

**Where the money came from in 2015**



**Where the money went in 2015**



# Thank You

There has always been something special about our door at Dublin Simon Community. For our clients and residents, our door is theirs to open whenever they need us; as so many doors have remained closed, or even out of reach.

**Since we began, it is this message of hope, light and welcoming warmth that we have continued to give to people in their darkest hour.** As the tragic homeless and housing crisis has escalated, the generosity of our supporters means that we are able to respond when we are needed. Because of you, we can continue to open our door to people and families, giving ongoing support to help them along the path out of homelessness.

For vulnerable people who are living without a home or at risk of becoming homeless, with your support we will be there to help them up. From Outreach, Supported Housing, Recovery, Treatment and Counselling, to Prevention, Independent Living, Education and Employability Services, each day you are making a life changing difference.

Thank you for continuing to give us the power to help people, families and children across Dublin Kildare, Wicklow and Meath. This belief ensures our clients and residents know that even though they may be without a home they are not any less. **With you by their side they will have their own power to overcome these tough times, and establish a safe and secure home in their community.**

Finally, a special thank you to all our staff and volunteers who work tirelessly around the clock to help make home a reality. Your dedication, commitment and belief in our clients enables them to rebuild their lives and plan their next steps.



Volunteers graduate at DIT



Supporters at the Simon Fun Run



Camino Hikers



Head2Head Cycle



Minister Ó Ríordáin at our Recovery launch



Students from CBC Monkstown



The Simon Dance Group performing



The Simon House of Light



Dublin Simon Community  
1-2 Cope Street, Dublin 2  
Tel: 01 671 5551  
Fax: 01 671 5524  
[www.dubsimon.ie](http://www.dubsimon.ie)  
[inforequest@dubsimon.ie](mailto:inforequest@dubsimon.ie)  
CHY5963



Comhairle Cathrach  
Bhaile Átha Cliath  
Dublin City Council



An Roinn Tithíochta, Pleanála, Pobail agus Rialaithe Áitiúil  
Department of Housing, Planning, Community and Local Government



Feidhmeannacht na Seirbhíse Sláinte  
Health Service Executive



Wicklow County Council  
Comhairle Contae Chill Mhantáin



Feidhmeannacht um Dhaoiné ar Easpa  
Dídeine Réigiún Bhaile Átha Cliath  
Dublin Region Homeless Executive



An Roinn Coimroice Sóisialaí  
Department of Social Protection  
Helping you build a better life



Kildare County Council  
Comhairle Contae Chill Dara



comhairle chontae na mí  
meath county council