

**HIV & AIDS Diagnoses in Ireland**  
**Supplementary Tables & Figures**  
**To end of 2010**

Updated 26<sup>th</sup> May 2011

## HIV/AIDS Surveillance Tables

---

### Data updates

These tables will be updated every six months and made available on the HPSC website at <http://www.hpsc.ie/hpsc/A-Z/HepatitisHIVAIDSandSTIs/HIVandAIDS/SurveillanceReports>

### Data sources

Information on newly diagnosed HIV infections is sent by laboratories and clinicians to the HPSC, via the Departments of Public Health, as part of the national HIV case based reporting system. Reports of new AIDS cases and deaths among AIDS cases are also reported by clinicians to the HPSC via the Departments of Public Health. All reporting of new diagnoses of HIV infection and AIDS is voluntary and confidential.

Paediatric data is obtained from Dr Karina Butler in Our Lady's Children's Hospital in Crumlin.

### Reporting case definition - new case definition for HIV surveillance

It became apparent during 2008 that some newly diagnosed HIV infections between 2003 and 2008 had not been reported in the national HIV case based reporting system mainly due to the laboratory reporting criteria in place in the National Virus Reference Laboratory (NVRL), i.e. a requirement for cases to serologically test positive on two separate samples. In January 2009, it was agreed by partners of the National AIDS Strategy Committee (NASC) to revise the laboratory reporting criteria for HIV as follows:

An anti-HIV confirmed serological positive result on the first sample, with **one** of the following subsequent tests on a separate **second** sample:

- A serological anti-HIV positive result.
- A significant viral load result, where a detectable quantity of HIV nucleic acid is reported.

These new laboratory reporting criteria were retrospectively applied to cases diagnosed in the NVRL between 2003 and 2008. As a result of this, figures for 2003, 2004, 2005, 2006 and 2007 have been updated and are reflected in the following tables.

### Abbreviations used

MSM: Men who have sex with men; IDU: Injecting Drug User; MTCT: Mother to child transmission

## Index of tables and figures

---

Table 1: HIV infections, AIDS cases and deaths among AIDS cases by year of diagnosis/death (1990 to 2010)

Table 2: HIV and AIDS diagnoses by year of diagnosis and sex (2000 to 2010)

Table 3: HIV cases by probable route of transmission and year of diagnosis (2000 to 2010)

Table 4: HIV cases by probable route of transmission, sex and year of diagnosis (2000 to 2010)

Table 5: HIV cases by geographic origin and year of diagnosis (2000 to 2010)

Table 6: HIV cases by probable route of transmission, geographic origin and year of diagnosis (2000 to 2010)

Table 7: HIV cases by age group and year of diagnosis (2002 to 2010)

Table 8: HIV cases by age group and year of diagnosis among Injecting Drug Users (2002 to 2010)

Table 9: HIV cases by age group and year of diagnosis among male heterosexual cases (2002 to 2010)

Table 10: HIV cases by age group and year of diagnosis among female heterosexual cases (2002 to 2010)

Table 11: HIV cases by age group and year of diagnosis among MSM (2002 to 2010)

Table 12: HIV cases by area of residence and year of diagnosis (2002 to 2010)

Table 13: HIV cases in heterosexuals by transmission subcategory (2003 to 2010)

Figure 1: HIV and AIDS cases by year of diagnosis (1990 to 2010)

Figure 2: HIV cases by probable route of transmission and year of diagnosis (2000-2010)

Figure 3: HIV cases by gender and year of diagnosis (2000 to 2010)

Figure 4: HIV cases by geographic origin and year of diagnosis (2000 to 2010)

Figure 5: Irish born HIV cases by probable route of transmission and year of diagnosis (2003-2010)

Figure 6: Non-Irish born cases by probable route of transmission and year of diagnosis (2003-2010)

Figure 7: AIDS cases by key exposure group and year of diagnosis (1990 to 2010)

**Table 1: HIV infections, AIDS cases and deaths among AIDS cases by year of diagnosis/year of death (1990 to 2010)**

Year	90	91	92	93	94	95	96	97	98	99	00	01	02	03	04	05	06	07	08	09	10
<b>HIV infections</b>	105	89	195	127	80	91	101	110	120	190	290	299	364	401	358	326	353	391	404	395	331
<b>AIDS</b>	68	72	72	75	76	53	55	30	18	25	13	26	35	39	44	42	42	35	36	37	30
<b>Deaths among AIDS cases</b>	18	26	44	38	39	50	33	11	11	17	10	6	6	4	8	8	8	6	3	5	5

**Table 2: HIV and AIDS diagnoses by year of diagnosis and sex (2000 to 2010)**

Sex		2000	2001	2002	2003	2004	2005	2006	2007	2008	2009	2010
<b>HIV diagnoses</b>	Females	116	134	198	195	164	137	132	149	146	137	89
	Males	174	163	165	206	194	189	221	242	258	258	240
	Unknown	-	2	1	-	-	-	-	-	-	-	2
	<b>Total</b>	<b>290</b>	<b>299</b>	<b>364</b>	<b>401</b>	<b>358</b>	<b>326</b>	<b>353</b>	<b>391</b>	<b>404</b>	<b>395</b>	<b>331</b>
<b>AIDS diagnoses</b>	Females	3	5	8	12	15	14	8	15	8	9	11
	Males	10	21	26	27	29	28	34	18	28	28	25
	Unknown	-	-	-	-	-	-	-	1	-	-	-
	<b>Total</b>	<b>13</b>	<b>26</b>	<b>34</b>	<b>39</b>	<b>44</b>	<b>42</b>	<b>42</b>	<b>34</b>	<b>35</b>	<b>33</b>	<b>36</b>

**Table 3: HIV cases by probable route of transmission and year of diagnosis (2000 to 2010)**

		2000	2001	2002	2003	2004	2005	2006	2007	2008	2009	2010
<b>Probable route of transmission</b>	MSM	72	73	46	76	63	60	89	91	104	138	134
	IDU	83	38	51	50	72	67	59	55	40	30	22
	Heterosexual	127	173	232	222	179	171	181	165	190	160	123
	MCT	4	5	8	11	3	3	2	6	7	5	10
	Other	4	10	4	4	4	6	3	4	-	1	5
	Unknown	-	-	23	38	36	19	19	70	63	61	37
	<b>Total</b>		<b>290</b>	<b>299</b>	<b>364</b>	<b>401</b>	<b>358</b>	<b>326</b>	<b>353</b>	<b>391</b>	<b>404</b>	<b>395</b>

**Table 4: HIV cases by probable route of transmission, sex and year of diagnosis (2000 to 2010)**

		2000	2001	2002	2003	2004	2005	2006	2007	2008	2009	2010
<b>MSM</b>	Males	<b>72</b>	<b>73</b>	<b>46</b>	<b>76</b>	<b>63</b>	<b>60</b>	<b>89</b>	<b>91</b>	<b>104</b>	<b>138</b>	<b>134</b>
<b>Heterosexual</b>	Males	44	57	64	76	62	74	78	68	79	62	54
	Females	83	115	168	146	117	97	103	97	111	98	69
	Unknown	-	1	-	-	-	-	-	-	-	-	-
	<b>Sub total</b>	<b>127</b>	<b>173</b>	<b>232</b>	<b>222</b>	<b>179</b>	<b>171</b>	<b>181</b>	<b>165</b>	<b>190</b>	<b>160</b>	<b>123</b>
<b>IDU</b>	Males	53	27	34	32	45	38	44	40	30	24	18
	Females	30	11	17	18	27	29	15	15	10	6	4
	<b>Sub total</b>	<b>83</b>	<b>38</b>	<b>51</b>	<b>50</b>	<b>72</b>	<b>67</b>	<b>59</b>	<b>55</b>	<b>40</b>	<b>30</b>	<b>22</b>
<b>MCT</b>	Males	2	2	5	5	1	2	2	4	5	2	5
	Females	2	3	3	6	2	1	-	2	2	3	5
	<b>Sub total</b>	<b>4</b>	<b>5</b>	<b>8</b>	<b>11</b>	<b>3</b>	<b>3</b>	<b>2</b>	<b>6</b>	<b>7</b>	<b>5</b>	<b>10</b>
<b>Other</b>	Males	3	4	3	3	2	3	3	3	-	-	4
	Females	1	5	1	1	2	3	-	1	-	1	1
	Unknown	-	1	-	-	-	-	-	-	-	-	-
	<b>Sub total</b>	<b>4</b>	<b>10</b>	<b>4</b>	<b>4</b>	<b>4</b>	<b>6</b>	<b>3</b>	<b>4</b>	<b>-</b>	<b>1</b>	<b>5</b>
<b>Unknown</b>	Males	-	-	13	14	21	12	5	36	40	32	25
	Females	-	-	9	24	14	7	14	34	23	29	10
	Unknown	-	-	1	-	2	-	-	-	-	-	2
	<b>Sub total</b>	<b>-</b>	<b>-</b>	<b>23</b>	<b>38</b>	<b>37</b>	<b>19</b>	<b>19</b>	<b>70</b>	<b>63</b>	<b>61</b>	<b>37</b>
<b>Total</b>		<b>290</b>	<b>299</b>	<b>364</b>	<b>401</b>	<b>358</b>	<b>326</b>	<b>353</b>	<b>391</b>	<b>404</b>	<b>395</b>	<b>331</b>

**Table 5: HIV cases by geographic origin and year of diagnosis (2002 to 2010)<sup>1</sup>**

<b>Origin (based on country of birth)</b>	<b>2002</b>	<b>2003</b>	<b>2004</b>	<b>2005</b>	<b>2006</b>	<b>2007</b>	<b>2008</b>	<b>2009</b>	<b>2010</b>
Ireland	94	137	145	138	135	124	126	141	136
Sub-Saharan Africa	188	199	130	124	123	111	127	101	71
Western Europe	14	16	25	16	20	18	31	21	15
Central & Eastern Europe	3	1	7	9	17	29	25	28	32
Latin America & Caribbean	1	1	1	2	4	7	8	14	22
North America	2	5	2	-	5	4	1	0	2
South & South East Asia	5	3	3	5	11	4	5	5	1
Foreign born - Other	4	1	2	4	2	3	2	2	1
Unknown	53	38	43	28	36	91	79	83	51
<b>Total</b>	<b>364</b>	<b>401</b>	<b>358</b>	<b>326</b>	<b>353</b>	<b>391</b>	<b>404</b>	<b>395</b>	<b>331</b>

---

<sup>1</sup> Data by geographic origin not available for 2000 and 2001

**Table 6: HIV cases by probable route of transmission, geographic origin and year of diagnosis (2000 to 2009)**

Probable route of transmission		2002	2003	2004	2005	2006	2007	2008	2009	2010
<b>MSM</b>	Ireland	30	57	42	43	62	54	57	87	91
	Western Europe	8	8	12	8	10	10	20	15	9
	Central & Eastern Europe	-	1	-	1	5	6	8	8	8
	Latin America & Caribbean	-	1	1	-	3	4	6	12	15
	Sub-Saharan Africa	-	3	2	5	1	3	4	-	-
	North America	2	5	1	-	1	2	-	-	1
	South & Southeast Asia	1	-	2	1	4	3	1	1	-
	Foreign born - other	3	1	-	-	-	1	1	2	-
	Unknown	2	-	3	2	3	8	7	13	10
	<b>Total</b>	<b>46</b>	<b>76</b>	<b>63</b>	<b>60</b>	<b>89</b>	<b>90</b>	<b>104</b>	<b>138</b>	<b>134</b>
<b>Heterosexual</b>	Ireland	24	30	37	35	33	31	36	40	31
	Sub-Saharan Africa	179	183	122	109	118	103	118	91	62
	Central & Eastern Europe	1	-	4	6	11	15	11	8	9
	Western Europe	2	3	9	7	5	4	8	4	5
	Latin America & Caribbean	-	-	-	2	1	1	1	2	7
	South & South East Asia	2	3	-	3	6	1	4	4	1
	Foreign born - other	1	-	2	2	2	4	-	-	2
	Unknown	23	3	5	7	5	6	12	11	6
<b>Total</b>	<b>232</b>	<b>222</b>	<b>179</b>	<b>171</b>	<b>181</b>	<b>165</b>	<b>190</b>	<b>156</b>	<b>123</b>	
<b>IDU</b>	Ireland	36	47	65	56	40	38	25	13	8
	Western Europe	2	3	3	1	5	2	3	2	1
	Central & Eastern Europe	2	-	2	2	1	7	6	12	8
	Foreign born - other	3	-	-	2	1	1	2	-	-
	Unknown	8	-	3	6	12	7	4	3	5
<b>Total</b>	<b>51</b>	<b>50</b>	<b>72</b>	<b>67</b>	<b>59</b>	<b>55</b>	<b>40</b>	<b>30</b>	<b>22</b>	



**Table 7: HIV cases by age group and year of diagnosis (2002 to 2010)**

<b>Age Group</b>	<b>2002</b>	<b>2003</b>	<b>2004</b>	<b>2005</b>	<b>2006</b>	<b>2007</b>	<b>2008</b>	<b>2009</b>	<b>2010</b>
<15	8	13	4	3	3	6	7	5	9
15-19	15	18	14	8	3	13	11	12	7
20-24	52	54	49	30	33	37	34	39	28
25-29	108	97	91	91	77	103	86	78	67
30-34	95	110	82	73	88	75	90	75	69
35-39	42	54	58	49	71	78	68	71	45
40-44	19	26	32	33	34	32	53	45	50
45-49	9	16	13	18	24	27	24	32	22
50-54	9	7	6	9	9	10	12	17	21
55-59	7	3	5	7	5	7	12	9	8
60+	-	3	4	5	6	3	7	12	5
<b>Total</b>	<b>364</b>	<b>401</b>	<b>358</b>	<b>326</b>	<b>353</b>	<b>391</b>	<b>404</b>	<b>395</b>	<b>331</b>

**Table 8: HIV cases by age group and year of diagnosis among IDUs (2002 to 2010)**

<b>Age Group</b>	<b>2002</b>	<b>2003</b>	<b>2004</b>	<b>2005</b>	<b>2006</b>	<b>2007</b>	<b>2008</b>	<b>2009</b>	<b>2010</b>
<b>15-19</b>	1	2	1	-	-	-	-	-	1
<b>20-24</b>	8	13	16	8	5	3	4	1	1
<b>25-29</b>	17	11	21	25	10	26	8	7	6
<b>30-34</b>	14	13	14	23	26	13	12	6	4
<b>35-39</b>	9	6	16	5	14	7	8	8	3
<b>40-44</b>	1	3	2	4	1	3	6	2	5
<b>45-49</b>	-	2	1	-	2	2	1	3	1
<b>50-54</b>	1	-	1	-	-	1	-	2	1
<b>55-59</b>	-	-	-	1	-	-	-	1	-
<b>60+</b>	-	-	-	-	-	-	1	-	-
<b>Total</b>	<b>51</b>	<b>50</b>	<b>72</b>	<b>66</b>	<b>58</b>	<b>55</b>	<b>40</b>	<b>30</b>	<b>22</b>

**Table 9: HIV cases by age group and year of diagnosis among male heterosexual cases (2002 to 2010)**

Age Group	2002	2003	2004	2005	2006	2007	2008	2009	2010
15-19	1	1	1	-	-	2	3	1	-
20-24	6	7	4	2	4	5	5	3	5
25-29	13	14	5	10	12	10	18	6	9
30-34	21	27	19	21	15	13	8	7	11
35-39	10	12	17	14	23	23	17	15	7
40-44	5	8	7	12	12	10	13	10	11
45-49	4	2	2	7	7	2	7	5	4
50-54	1	3	3	2	1	2	5	5	4
55-59	3	2	2	4	1	1	2	3	-
60+	-	-	1	2	2	-	1	5	3
<b>Total</b>	<b>64</b>	<b>76</b>	<b>62</b>	<b>74</b>	<b>78</b>	<b>68</b>	<b>79</b>	<b>60</b>	<b>54</b>

**Table 10: HIV cases by age group and year of diagnosis among female heterosexual cases (2002 to 2010)**

Age Group	2002	2003	2004	2005	2006	2007	2008	2009	2010
15-19	13	12	8	6	2	7	7	4	4
20-24	34	23	20	13	14	14	13	16	6
25-29	<b>60</b>	<b>50</b>	<b>43</b>	<b>38</b>	<b>35</b>	23	23	23	16
30-34	45	41	25	17	26	18	32	18	17
35-39	10	14	13	13	11	21	15	19	8
40-44	<b>4</b>	<b>3</b>	<b>5</b>	<b>4</b>	<b>8</b>	9	10	4	8
45-49	1	3	2	2	4	5	6	8	4
50-54	1	-	-	3	2	-	3	1	6
55-59	-	-	-	-	<b>1</b>	-	2	-	-
60+	-	-	-	1	-	-	-	3	-
<b>Total</b>	<b>168</b>	<b>146</b>	<b>117</b>	<b>97</b>	<b>103</b>	<b>97</b>	<b>111</b>	<b>96</b>	<b>69</b>

**Table 11: HIV cases by age group and year of diagnosis among MSM (2002 to 2010)**

<b>Age Group</b>	<b>2002</b>	<b>2003</b>	<b>2004</b>	<b>2005</b>	<b>2006</b>	<b>2007</b>	<b>2008</b>	<b>2009</b>	<b>2010</b>
<b>15-19</b>	-	1	-	-	1	-	1	3	-
<b>20-24</b>	2	5	5	6	8	5	9	14	12
<b>25-29</b>	6	11	13	9	14	21	24	29	30
<b>30-34</b>	12	17	15	8	18	15	21	31	29
<b>35-39</b>	10	19	6	13	18	18	17	20	22
<b>40-44</b>	5	9	14	11	11	8	15	18	16
<b>45-49</b>	3	7	7	9	9	15	7	9	12
<b>50-54</b>	5	4	2	2	5	4	3	7	8
<b>55-59</b>	3	1	-	1	2	3	5	3	4
<b>60+</b>	-	1	1	-	3	1	2	4	1
<b>Total</b>	<b>46</b>	<b>76</b>	<b>63</b>	<b>60</b>	<b>89</b>	<b>90</b>	<b>104</b>	<b>138</b>	<b>134</b>

**Table 12: HIV cases by area of residence and year of diagnosis (2002 to 2010)**

Area	2002	2003	2004	2005	2006	2007	2008	2009	2010
<b>HSE - East (Dublin, Kildare and Wicklow)</b>	219	229	223	214	199	205	208	206	175
<b>HSE – non East</b>	88	123	75	80	101	72	94	94	72
<b>Unknown</b>	57	49	60	32	53	114	102	95	84
<b>Total</b>	<b>364</b>	<b>401</b>	<b>358</b>	<b>326</b>	<b>353</b>	<b>391</b>	<b>404</b>	<b>395</b>	<b>331</b>

**Table 13: HIV cases in heterosexuals by transmission subcategory (2003 to 2010)**

Transmission Subcategory	2003	2004	2005	2006	2007	2008	2009	2010
Case from a country with a generalised HIV epidemic	188	124	113	124	104	121	94	64
Case with a high risk partner	1	5	2	3	4	7	2	5
Case with partner from a country with a generalised HIV epidemic	8	7	5	9	9	13	13	9
Other/Undetermined	25	43	51	45	48	49	51	45
<b>Total</b>	<b>222</b>	<b>179</b>	<b>171</b>	<b>181</b>	<b>165</b>	<b>190</b>	<b>160</b>	<b>123</b>

Figure 1: HIV and AIDS cases by year of diagnosis (1990 to 2010)

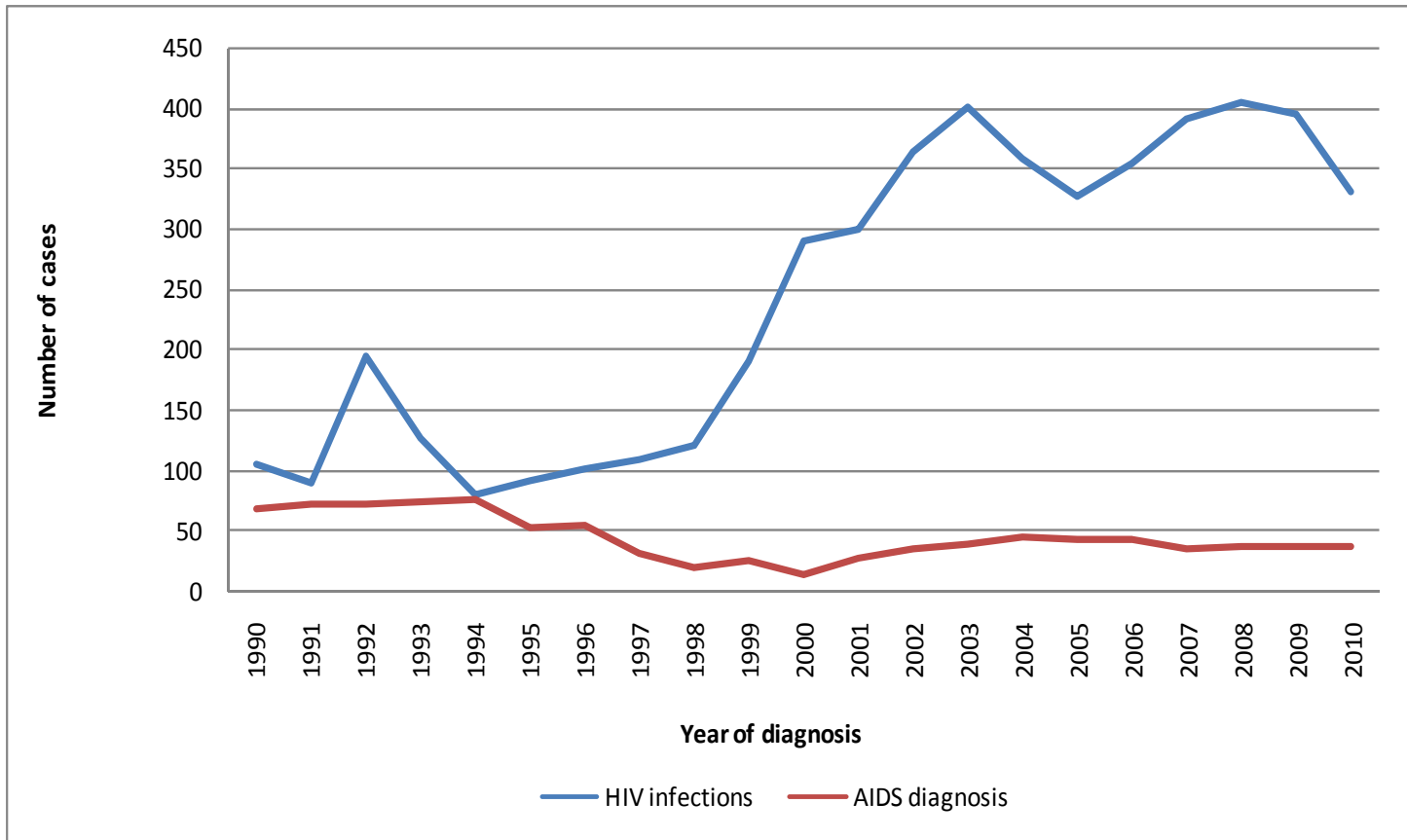


Figure 2: HIV cases by probable route of transmission, (1994 to 2010)

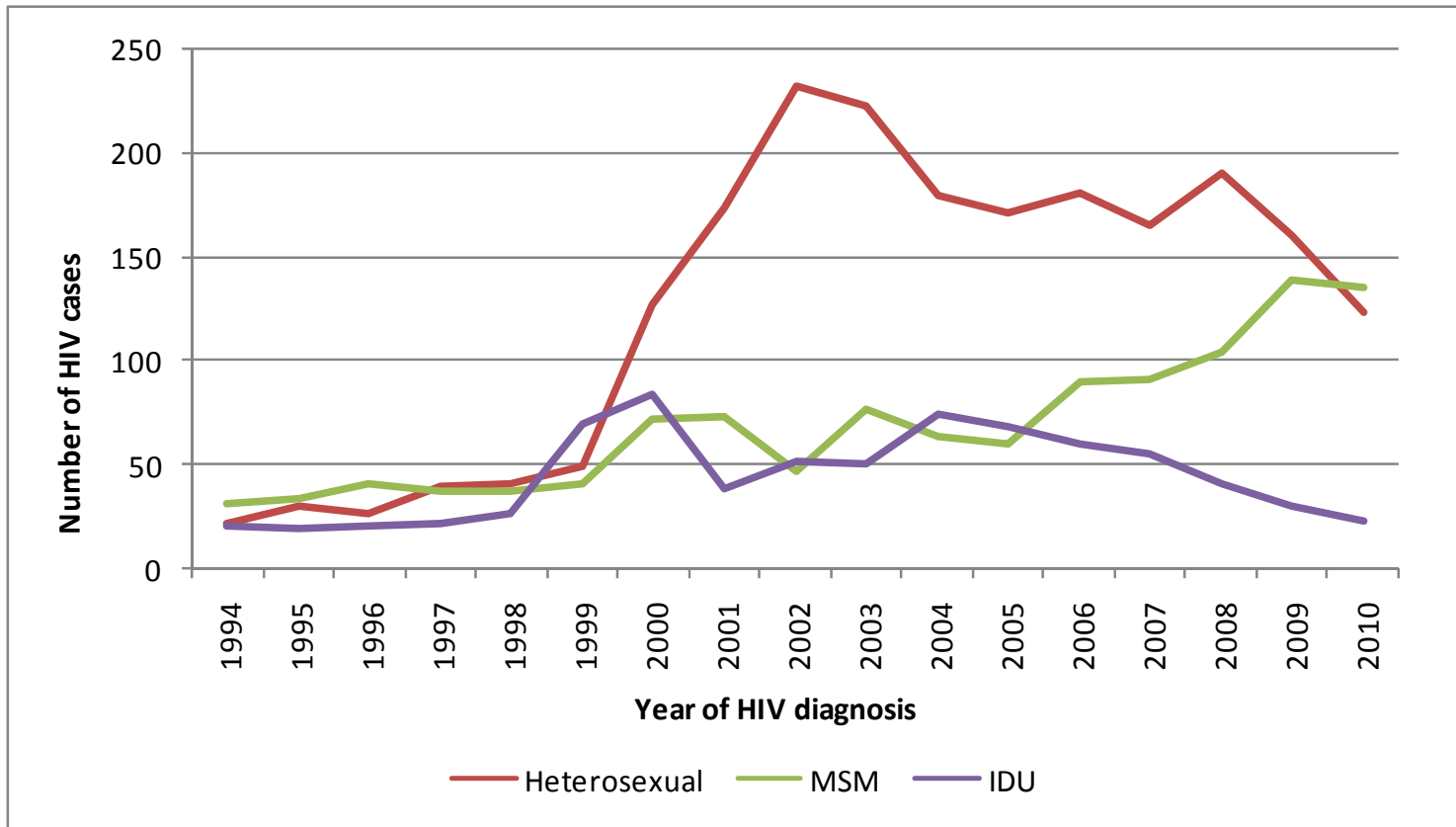


Figure 3: HIV cases by gender and year of diagnosis (2000 to 2010)

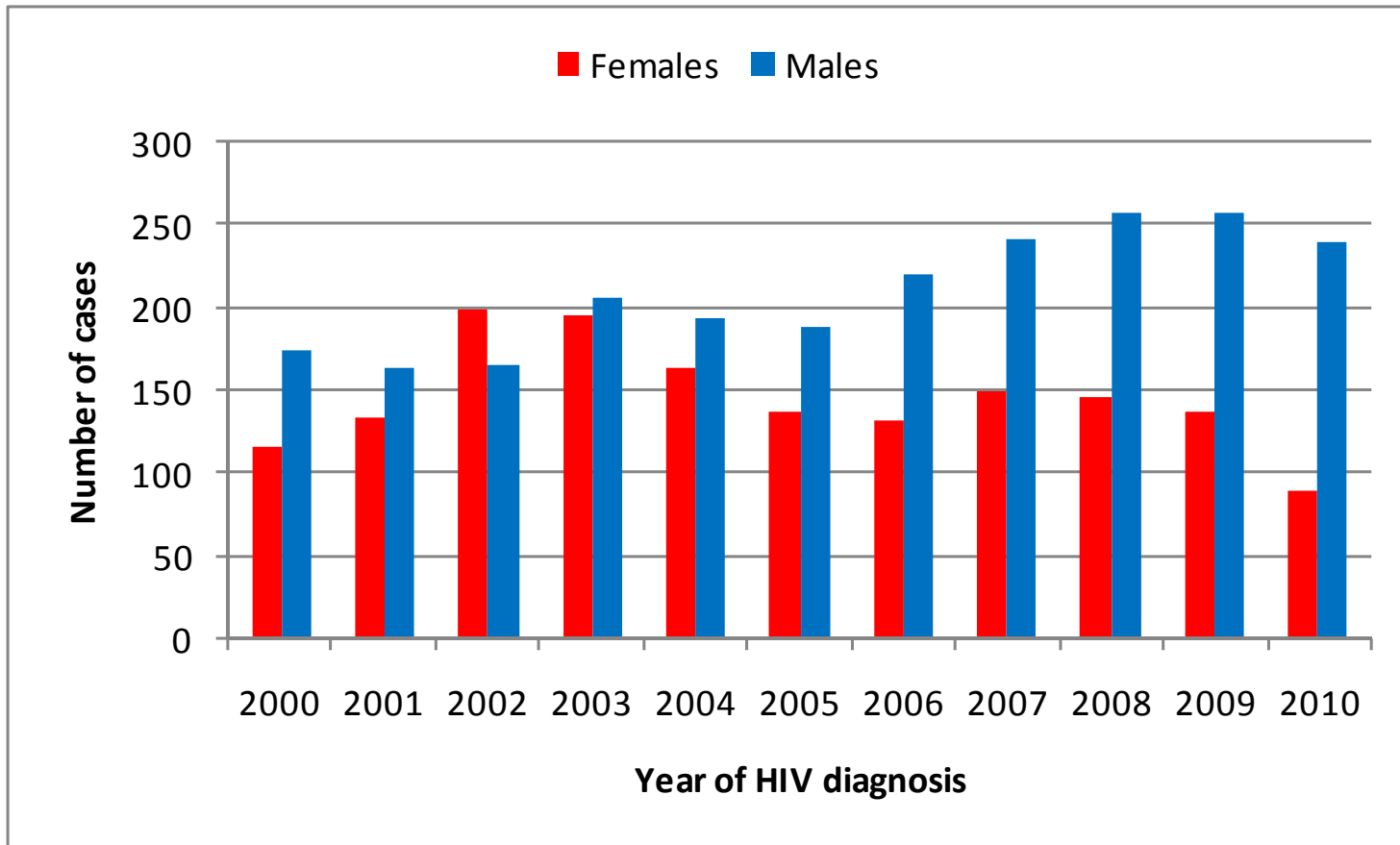




Figure 4: HIV cases by geographic origin and year of diagnosis (2002-2010)

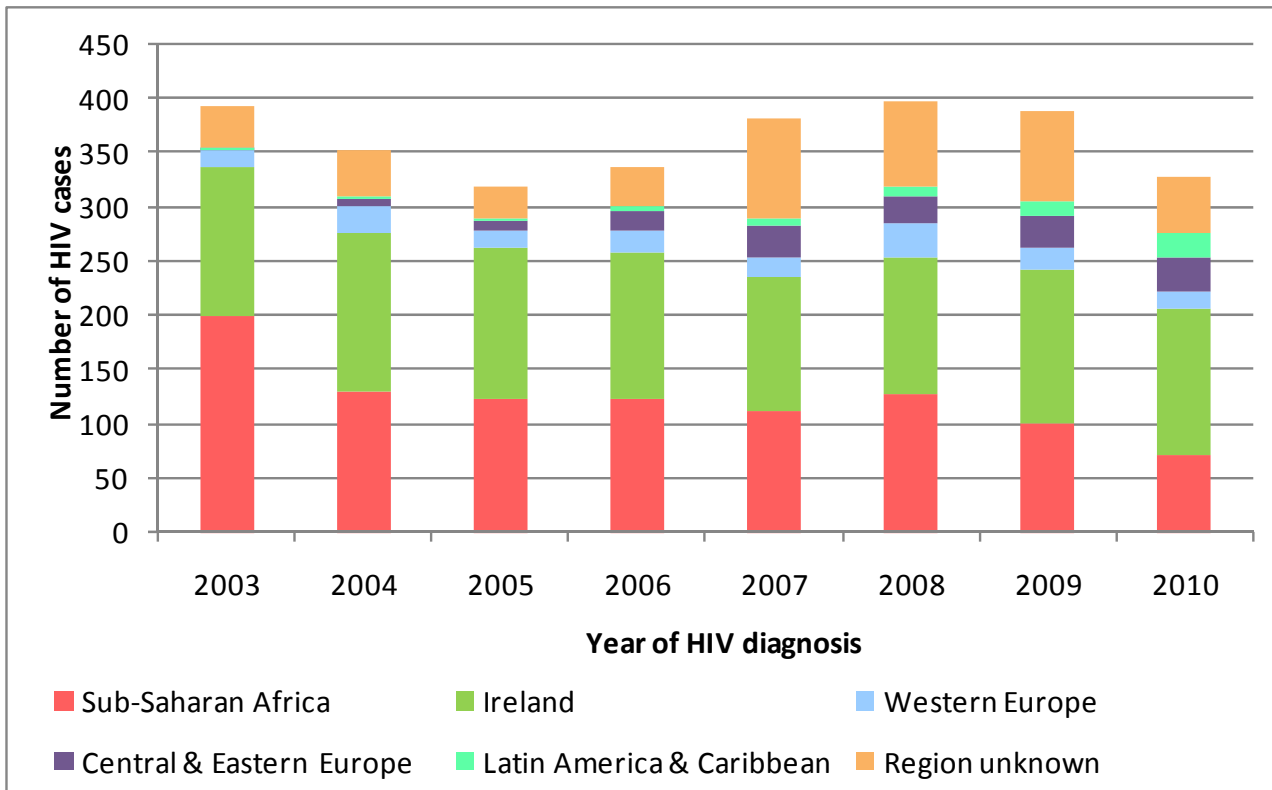


Figure 5: Irish born HIV cases by probable route of transmission and year of diagnosis, 2003-2010

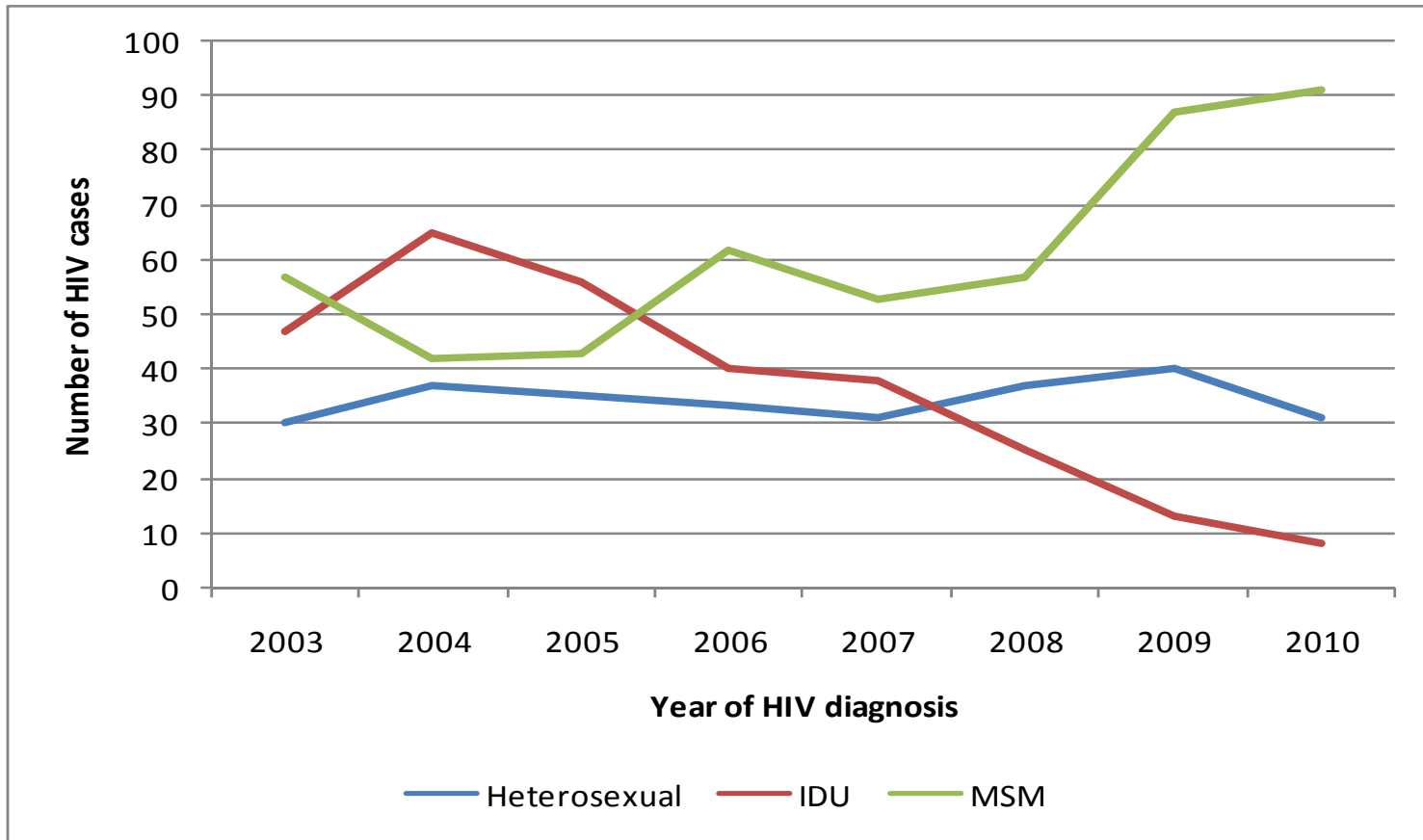


Figure 6: Non-Irish born cases by probable route of transmission and year of diagnosis (2003-2010)

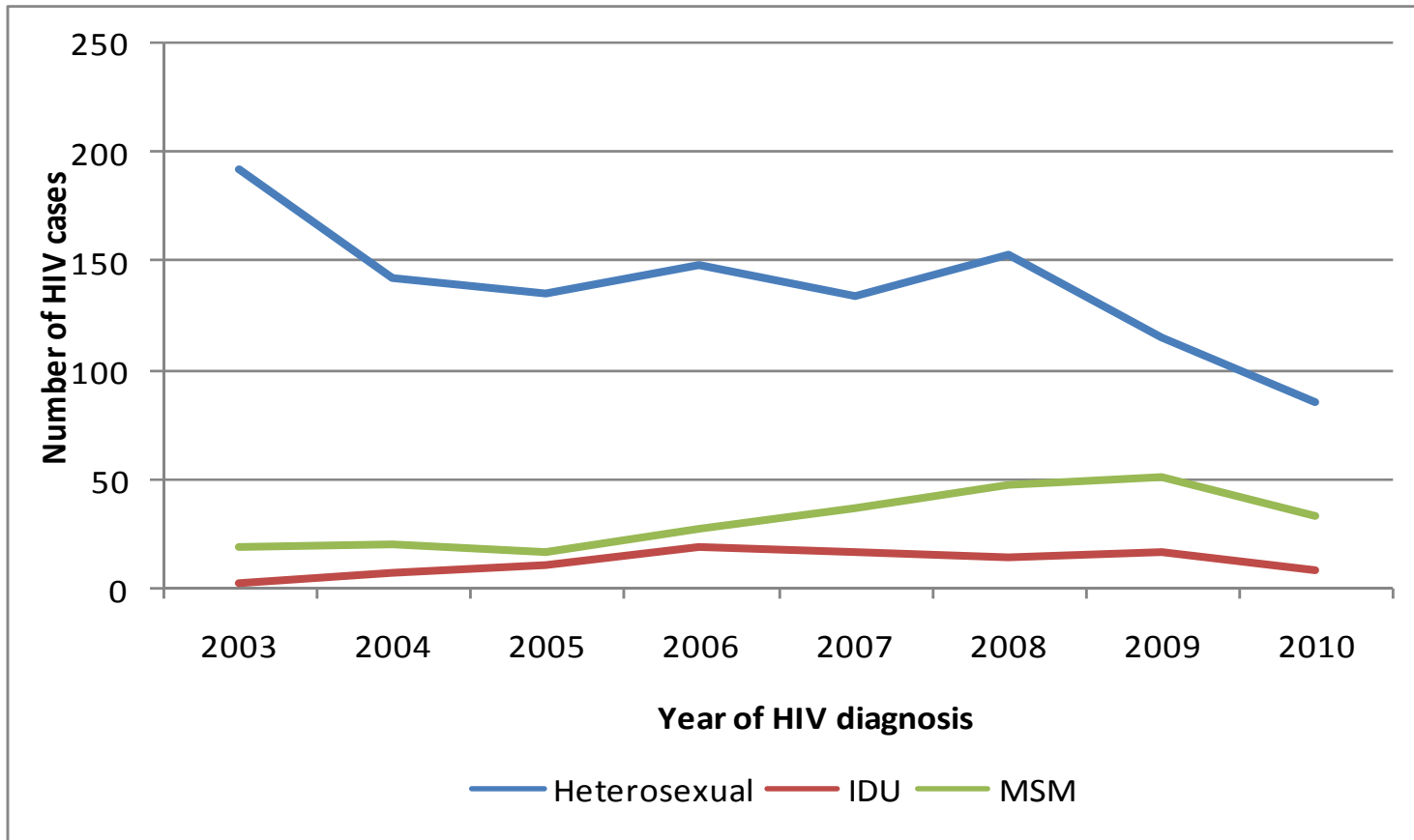


Figure 7: AIDS cases by key exposure group and year of diagnosis (1990 to 2010)

