



Feidhmeannacht na Seirbhíse Sláinte
Health Service Executive



HIV and AIDS Update

Quarter 1&2 2010

1st December 2010

Table 1: Breakdown of HIV cases by probable route of transmission, Q1&2 2010

Probable route of transmission (PROT)	Total (% of cases where PROT is known)	Female	Male	Sex unknown
MSM	57 (44.9%)	na	57	0
Heterosexual	51 (40.2%)	26	25	0
IDU	15 (11.8%)	2	12	1
Mother to Child	2 (1.6%)	1	1	0
Other	2 (1.6%)	0	2	0
Unknown	41 (24.4%)	15	26	0
Total	168	44	123	1

**Figure 1: HIV cases by route of transmission, year & quarter:
2003 to 2010**

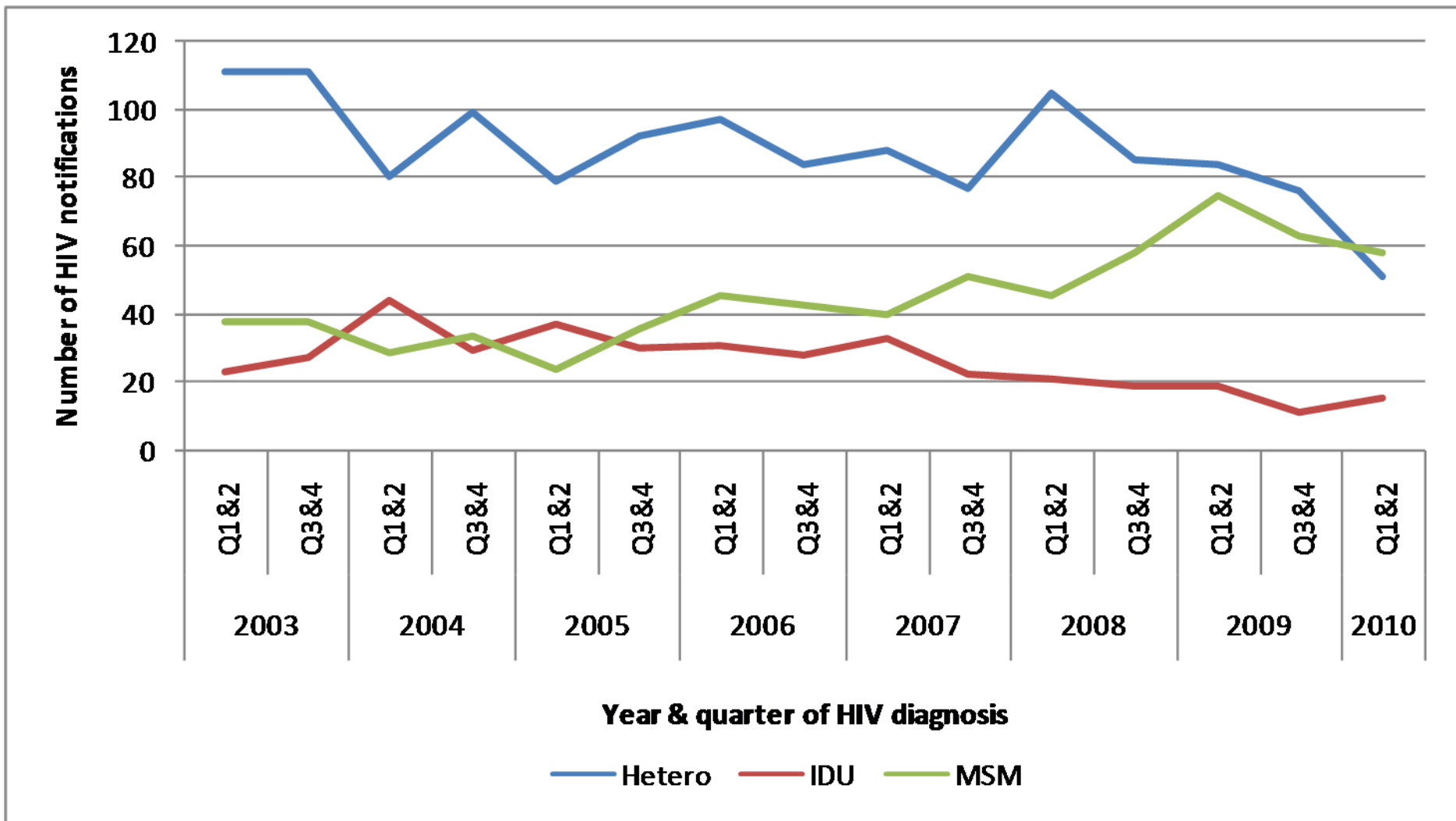


Table 2: Breakdown of HIV cases by geographic origin and gender, Q1&2 2010

Geographic Origin	Total	Female	Male	Sex unknown
Ireland	57	8	49	0
Sub Saharan Africa	23	11	12	0
Central & Eastern Europe	17	4	12	0
Western Europe	8	2	6	1
South America	6	1	5	0
Other	2	1	1	0
Unknown	55	17	38	0
Total	168	44	123	1

Table 3: Breakdown of HIV cases by geographic origin and probable route of transmission, Q1&2 2010

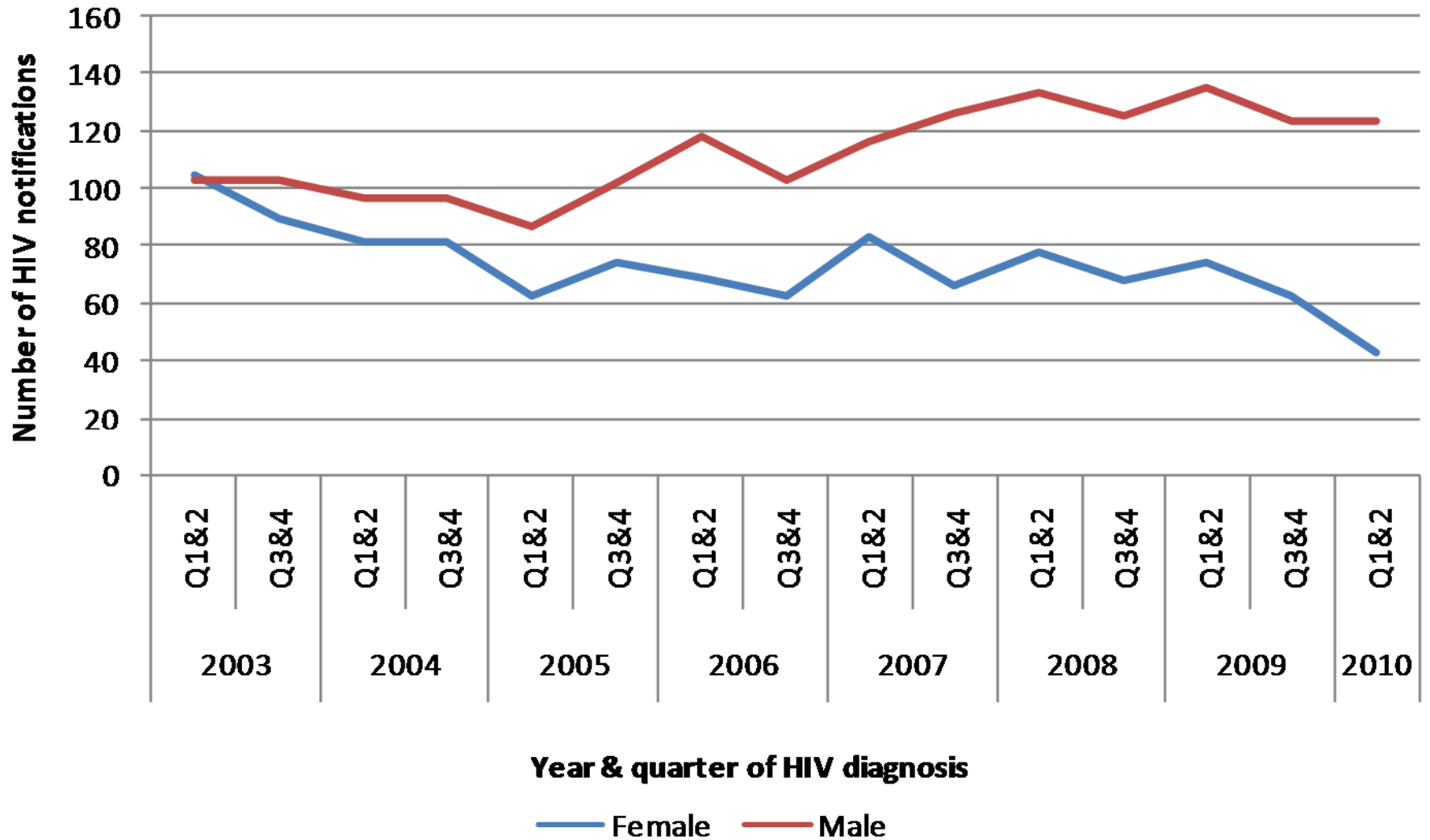
Geographic Origin	Hetero		MSM	IDU*		MTCT		Other	Unk		Total
	F	M	M	F	M	F	M	M	F	M	
Ireland	7	9	35	0	3	0	0	1	1	1	57
Sub-Saharan Africa	9	11	0	0	0	0	1	0	2	0	23
Central&Eastern Europe	2	2	2	1	5	1	0	1	0	2	16
Western Europe	2	2	4	0	0	0	0	0	0	0	8
South America	1	0	5	0	0	0	0	0	0	0	6
Other	1	0	1	0	0	0	0	0	0	0	2
Unknown	4	1	10	1	4	0	0	0	12	23	55
Total	26	25	57	2	12	1	1	2	15	26	167

*Sex unknown for 1 IDU case

Table 4: Breakdown of HIV cases by age group and probable route of transmission, Q1&2 2010

Age group	Hetero	MSM	IDU	MTCT	Other	Unknown	Total
0-9	0	0	0	0	0	0	0
10-19	2	0	1	1	0	2	6
20-29	12	16	6	1	0	11	46
30-39	21	25	4	0	0	13	63
40-49	10	10	4	0	0	8	32
50-59	4	5	0	0	2	7	18
60+	2	1	0	0	0	0	3
Total	51	57	15	2	2	41	168

Figure 2: HIV cases by sex, year & quarter, 2003 to 2010



**Figure 3: HIV cases by geographic origin, year & quarter:
2003 to 2010**

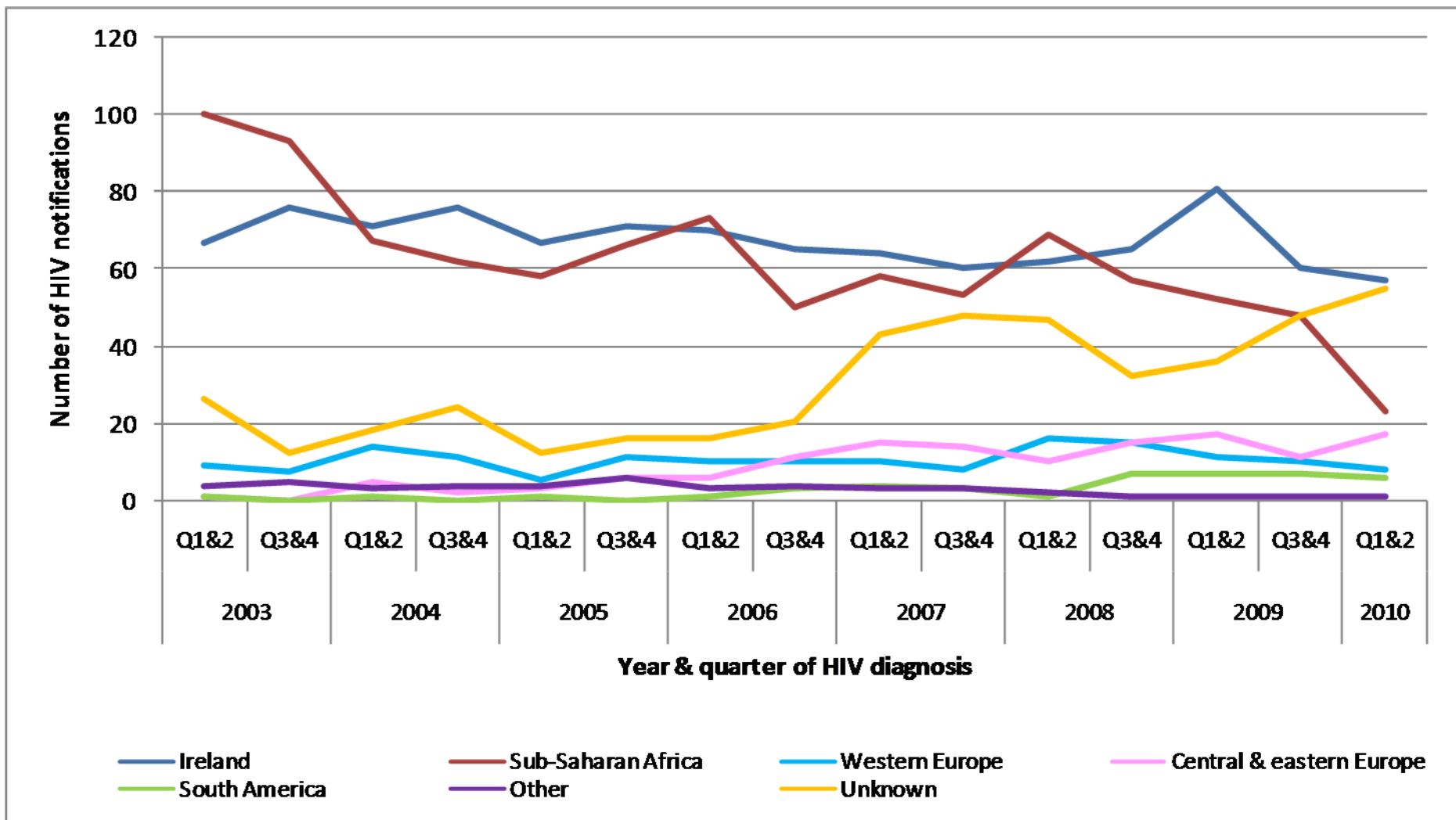


Figure 4: HIV cases by probable route of transmission and age group, Q1&2 2010

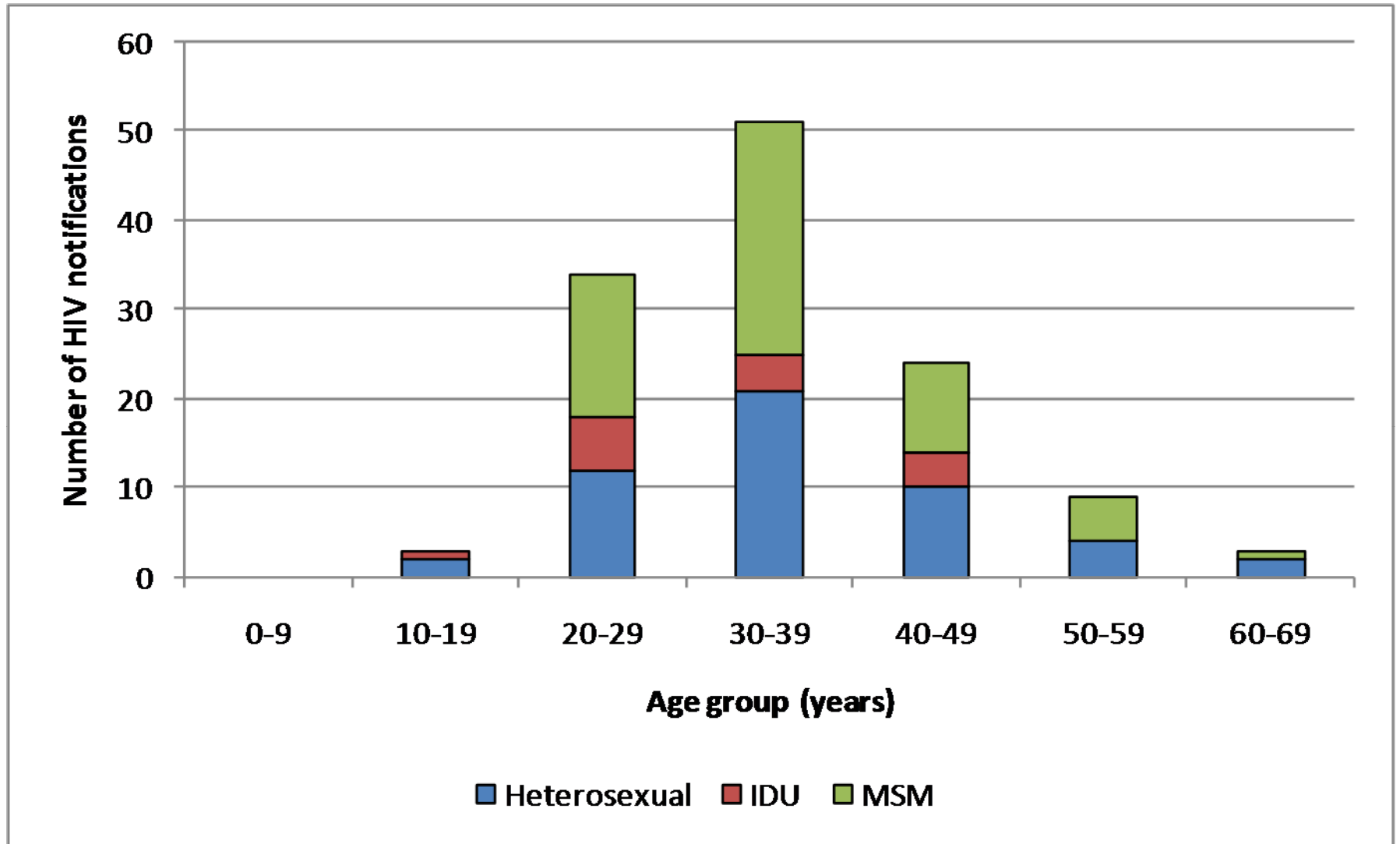


Figure 5: AIDS cases by year & quarter: 2003 to 2010

