

HIV and AIDS Update, Quarter 1&2, 2010



Key points

- There were 168 new HIV diagnoses reported in Q1&2 2010 compared to 209 in Q1&2 2009 and 186 in Q3&4 2009.
- The cumulative total of HIV infections to the end of June 2010 is 5,805
- Completed forms were received for 72.6% (122 cases) in Q1&2 2010
- Of the 127 cases where route of transmission was reported,
 - ♦ 44.9% (57 cases) were MSM,
 - ♦ 40.2% (51 cases) were heterosexual
 - ♦ 11.8% (15 cases) were IDU
- Risk group was unknown in 24.4% (41) of newly diagnosed cases.
- Males accounted for 73.2% of new cases (123 cases) and 26.2% were female (44 cases)
- Almost two thirds of cases (64.9%) were aged between 20 and 40 years.
- Of the cases where geographic origin was reported, 50.4% were Irish born and 20.4% were born in sub-Saharan Africa. A further 15.0% were born in Central and Eastern Europe.
- There were 18 new reports of AIDS cases diagnosed in Q1&2 2010
- The cumulative total of AIDS cases to the end of June 2010 is 1,066

Table 1: HIV cases by probable route of transmission and sex, Q1&2 2010

Probable route of transmission (PROT)	Total (% of cases where PROT is known)	Female	Male
MSM	57 (44.9%)	na	57
Heterosexual	51 (40.2%)	26	25
IDU*	15 (11.8%)	2	12
Mother to Child	2 (1.6%)	1	1
Other	2 (1.6%)	0	2
Unknown	41 (24.4%)	15	26
Total	168	44	123

*Sex was not reported for one IDU case in Q1&2 2010

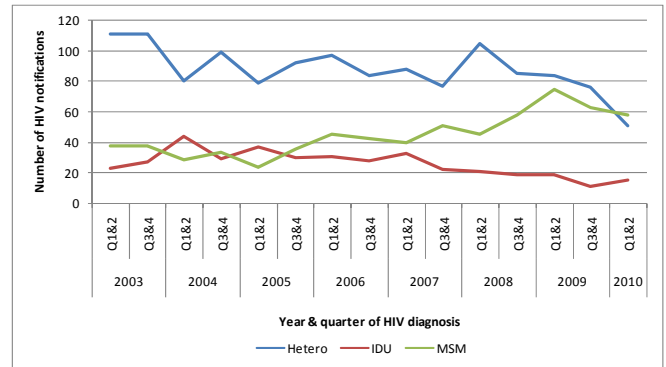


Figure 1: HIV cases by probable route of transmission and Year/Half Year, 2003 to 2010

Tables and Graphs

The following tables and graphs present the HIV data reported to HPSC up to November 26th 2010.

Further tables and slides on HIV and AIDS in Ireland can be found at <http://www.hpsc.ie/hpsc/A-Z/HepatitisHIVAIDSandSTIs/HIVandAIDS/SurveillanceReports/>

Table 2: HIV cases by geographic origin and sex, Q1&2 2010

Geographic Origin	Total	Female	Male
Ireland	57	8	49
Sub Saharan Africa	23	11	12
Central & Eastern	17	4	12
Western Europe	8	2	6
South America	6	1	5
Other	2	1	1
Unknown	55	17	38
Total	168	44	123

Table 3: HIV cases by geographic origin, probable route of transmission and sex, Q1&2 2010

Geographic origin	Hetero		MSM	IDU*		MTCT		Other	Unknown		Total
	F	M	M	F	M	F	M	M	F	M	
Ireland	7	9	35	0	3	0	0	1	1	1	57
Sub-Saharan Africa	9	11	0	0	0	0	1	0	2	0	23
Central & eastern Europe	2	2	2	1	5	1	0	1	0	2	16
Western Europe	2	2	4	0	0	0	0	0	0	0	8
South America	1	0	5	0	0	0	0	0	0	0	6
Other	1	0	1	0	0	0	0	0	0	0	2
Unknown	4	1	10	1	4	0	0	0	12	23	55
Total	26	25	57	2	12	1	1	2	15	26	167

*Sex was not reported for one IDU case in Q1&2 2010

Table 4: HIV cases by age group (years) and probable route of transmission: Q1&2 2010

Age group	Hetero	MSM	IDU	MTCT	Other	Unknown	Total
0-9	0	0	0	0	0	0	0
10-19	2	0	1	1	0	2	6
20-29	12	16	6	1	0	11	46
30-39	21	25	4	0	0	13	63
40-49	10	10	4	0	0	8	32
50-59	4	5	0	0	2	7	18
60+	2	1	0	0	0	0	3
Total	51	57	15	2	2	41	168

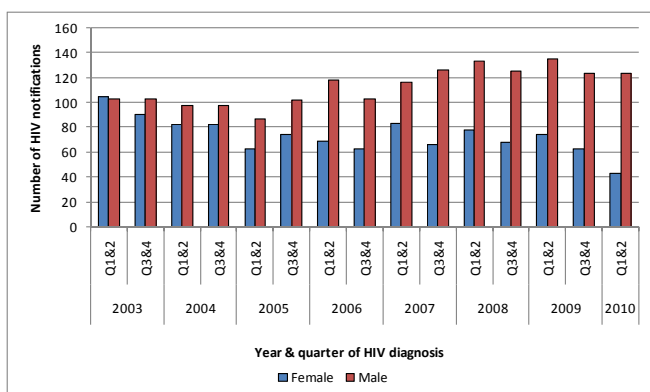


Figure 2: HIV cases by sex and Year/Half Year, 2003 to 2010

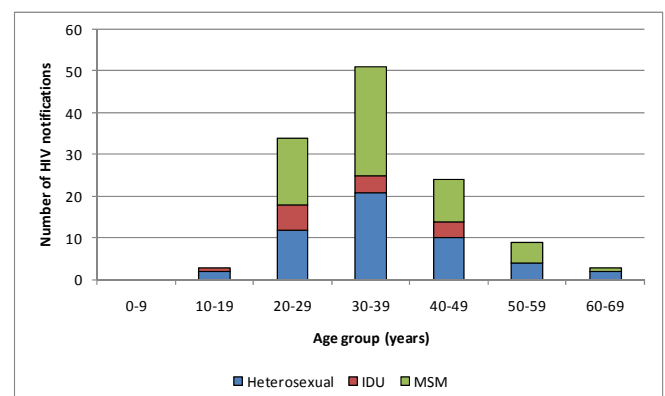


Figure 4: HIV cases by probable route of transmission and age group, Q1&2 2010

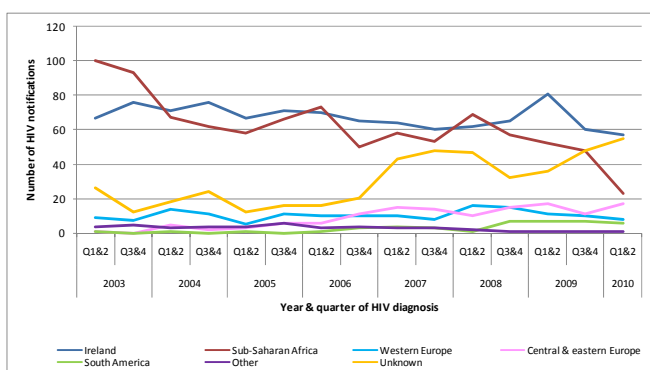


Figure 3: HIV cases by geographic origin and Year/Half Year, 2003 to 2010

Acknowledgements

HPSC wish to thank all who have provided data for this report – the National Virus Reference Laboratory, microbiology laboratories, the Departments of Public Health, Consultants in Infectious Disease/GUM and all other clinicians involved.

Report prepared by Sarah Jackson and Aidan O’Hora, Health Protection Surveillance Centre